



BUILDING A BETTER I-4

Stay Informed:

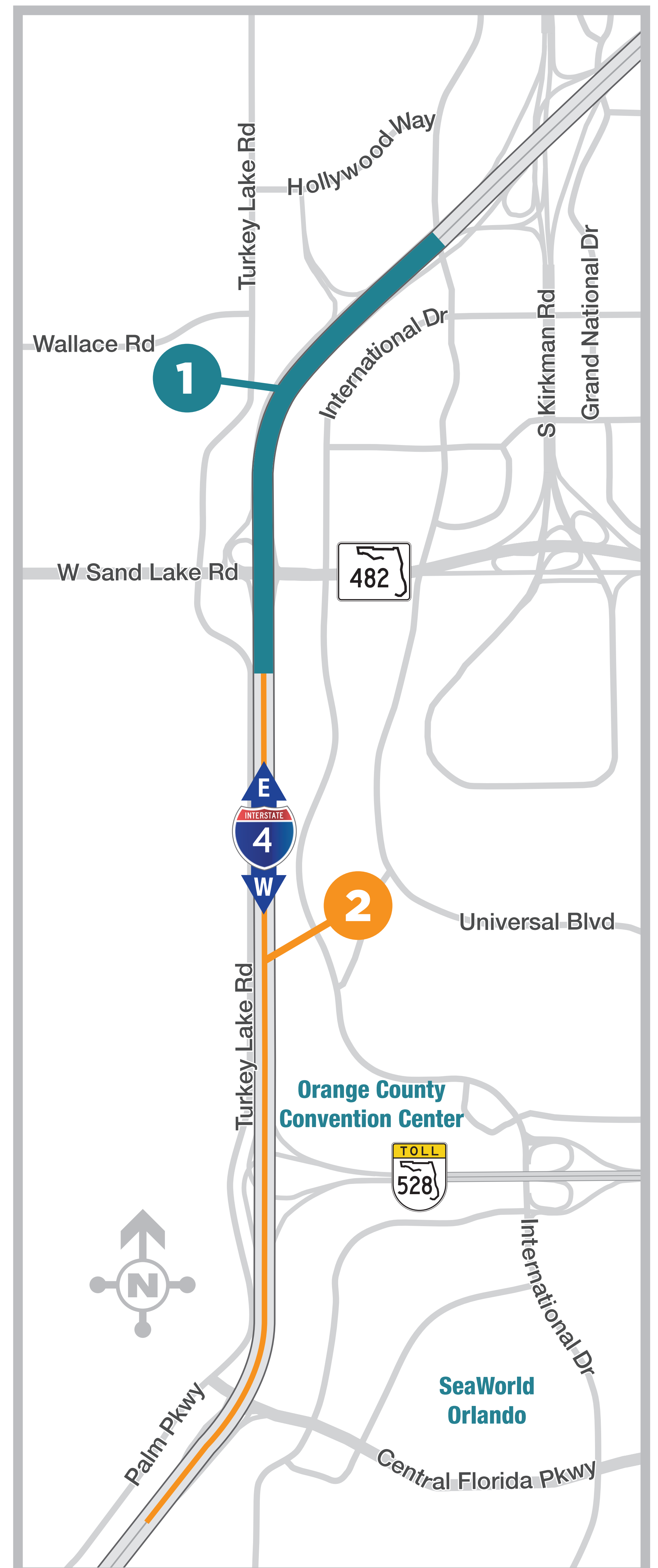
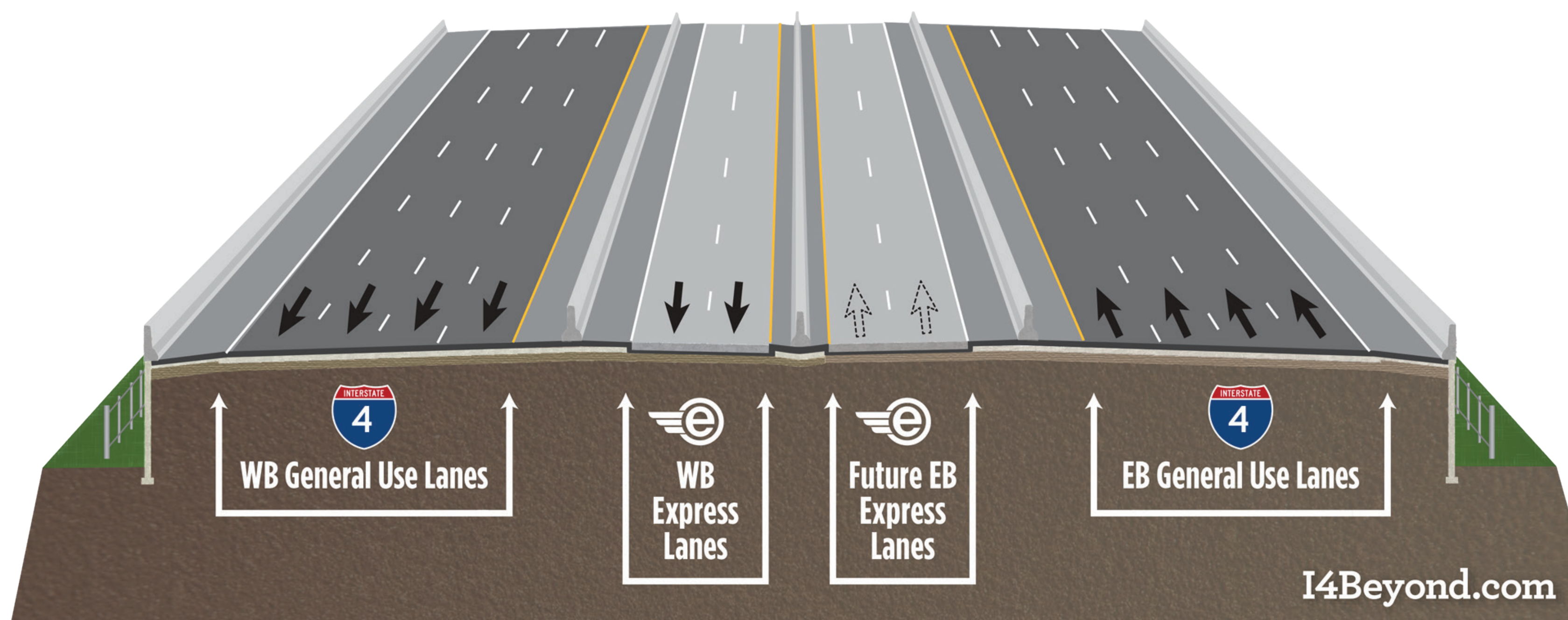
- » Project Hotline: 321-988-9375
- » Follow @i4Ultimate on Twitter
- » Subscribe to our monthly newsletter at fdot.tips/I4News
- » Subscribe to our YouTube channel at youtube.com/i4Ultimate

FUTURE IMPROVEMENTS TO INTERSTATE 4 (I-4) FROM WEST OF CENTRAL FLORIDA PARKWAY TO WEST OF KIRKMAN ROAD

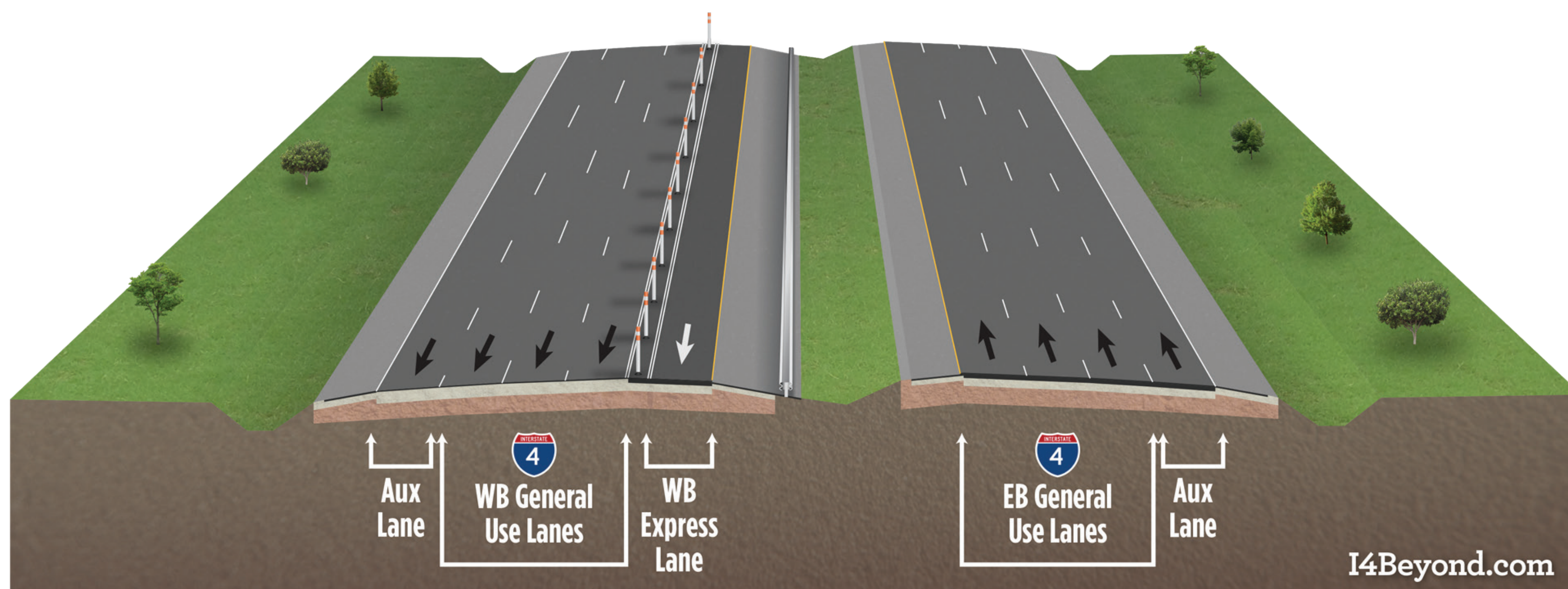
FINANCIAL PROJECT IDENTIFICATION (FPID) NOS.: 444315-1, 444315-3

The Florida Department of Transportation (FDOT) will soon provide motorists the option for longer trips on I-4 Express. There when you need it, I-4 Express is two tolled managed lanes in each direction in the center of I-4. Currently, I-4 Express spans 21 miles from west of Kirkman Road (State Road (S.R.) 435) to east of S.R. 434.

1 FDOT is reconstructing the I-4 and Sand Lake Road (S.R. 482) interchange as part of I-4 Beyond the Ultimate. The project will reconstruct the I-4 general use lanes and construct two westbound, barrier-separated express lanes. This will extend westbound I-4 Express from west of Kirkman Road to west of Sand Lake Road. FDOT will construct the eastbound express lanes in the future under a separate project.



2 The two westbound, barrier-separated express lanes will transition to a single, buffer-separated express lane west of Sand Lake Road. The Sand Lake Road project will construct the portion from west of Sand Lake Road to west of Central Florida Parkway. Two separate projects — one at Daryl Carter Parkway and one at S.R. 535 — will extend the westbound express lane to west of S.R. 536. For more information on I-4 Express, visit i4express.com.



Visit I4Beyond.com for more information on I-4 Beyond the Ultimate designs, including an interactive map showing anticipated designs for each interchange.

