

Wrong-Way Driving Alert System Fact Sheet

» Learn more at
i4Beyond.com/wrongway

Reducing Wrong-Way Incidents

Wrong-way driving crashes occur when a driver has not observed posted traffic signs and proceeds in a lane going the wrong direction, increasing the risk of a head-on collision. As the Florida Department of Transportation (FDOT) continues to enhance the safety of roads and interstates, Wrong Way Vehicle Detection Systems (WWVDS) are being implemented on the State Highway System off-ramps to deter wrong-way driving incidents.

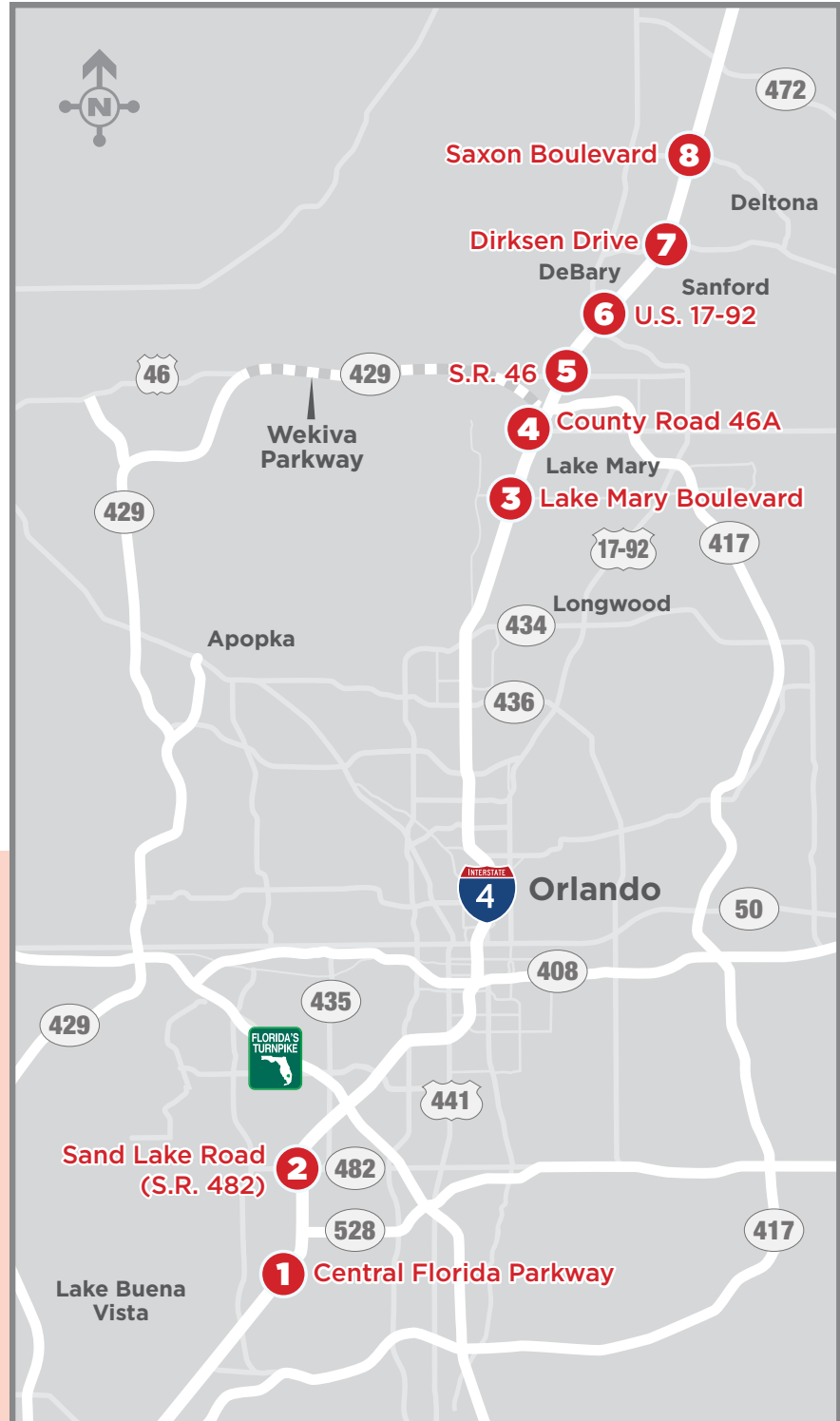


To help motorists properly identify interstate entrance and exit ramps, FDOT is increasing the amount of wrong-way signage, roadway reflectors and pavement markings. Installation of WWVDS and other driving deterrents includes detection signs at 17 off-ramps along Interstate 4 (I-4) in Orange, Seminole, and Volusia counties.

Wrong Way Vehicle Detection Systems

FDOT is installing signs at the following I-4 interchanges:

1. Central Florida Parkway
2. Sand Lake Road (State Road [S.R.] 482)
3. Lake Mary Boulevard
4. County Road (C.R.) 46A
5. S.R. 46
6. U.S. 17-92
7. Dirksen Drive
8. Saxon Boulevard



For more information on the WWVDS, visit I4Beyond.com/wrongway



Florida Department of Transportation
Improve Safety, Enhance Mobility, Inspire Innovation

 CFLRoads.com
 @MyFDOT_CFL

 MyFDOTCFL
 MYFDOT_CFL

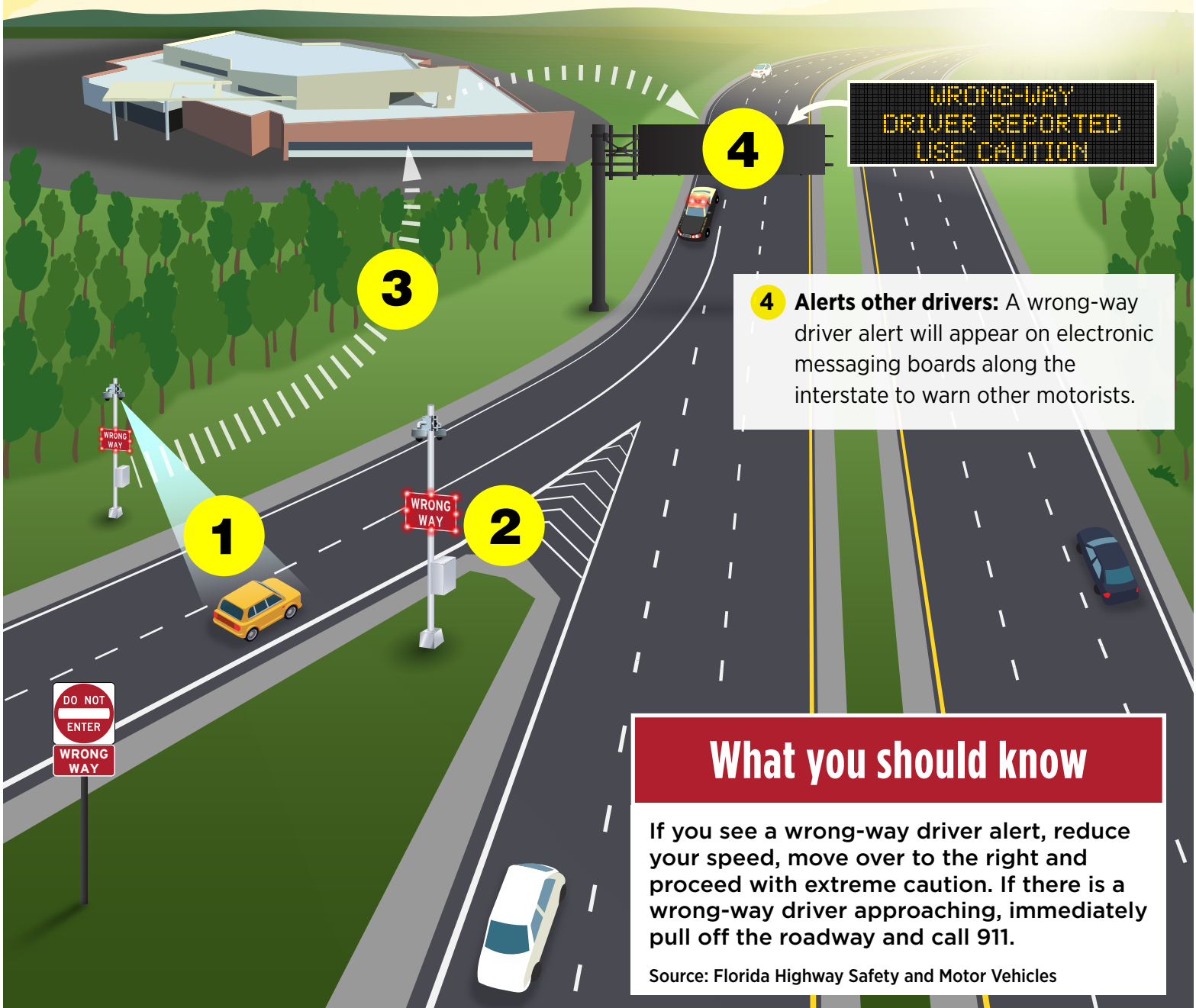
How Wrong-Way Driving Alert Systems Work

» Learn more at i4Beyond.com/wrongway

1 Detects vehicles: Signs located on exit ramps use various technologies to detect a driver going the wrong way.

2 Triggers lights: Flashing lights are activated to notify the driver if he/she is traveling in the wrong direction.

3 Notifies officials: Radar detection sends alert immediately to FDOT traffic managers and law enforcement officials.



4 Alerts other drivers: A wrong-way driver alert will appear on electronic messaging boards along the interstate to warn other motorists.

What you should know

If you see a wrong-way driver alert, reduce your speed, move over to the right and proceed with extreme caution. If there is a wrong-way driver approaching, immediately pull off the roadway and call 911.

Source: Florida Highway Safety and Motor Vehicles



Florida Department of Transportation
Improve Safety, Enhance Mobility, Inspire Innovation

[CFLRoads.com](https://www.cflroads.com)
[@MyFDOT_CFL](https://twitter.com/MyFDOT_CFL)

[MyFDOTCFL](https://www.facebook.com/MyFDOTCFL)
[MYFDOT_CFL](https://www.instagram.com/MyFDOT_CFL)