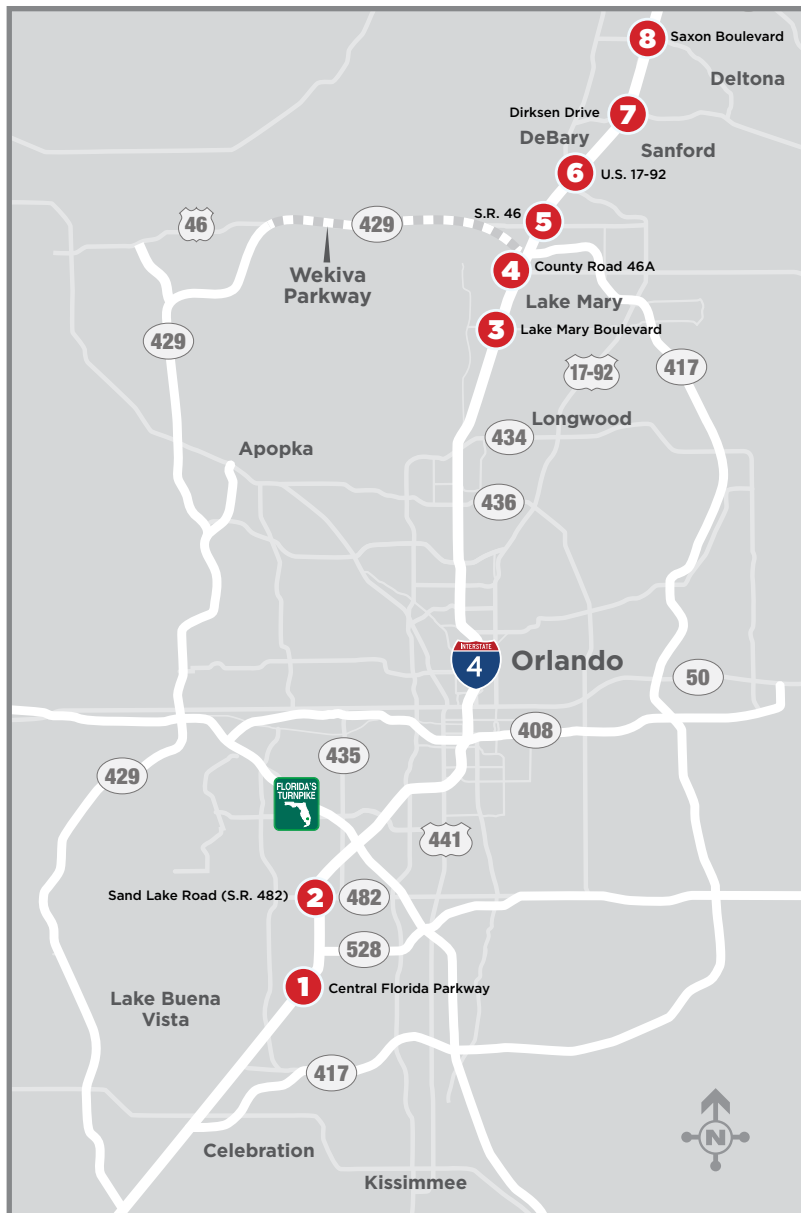


# Wrong-Way Driving Alert System Fact Sheet

» Learn more at  
[i4Beyond.com/wrongway](https://www.i4Beyond.com/wrongway)

## Reducing Wrong-Way Incidents

Wrong-way driving crashes occur when a driver has not observed posted traffic signs and proceeds in a lane going the wrong direction, increasing the risk of a head-on collision. As the Florida Department of Transportation (FDOT) continues to enhance the safety of roads and interstates, Wrong Way Vehicle Detection Systems (WWVDS) are being implemented on the State Highway System off-ramps to deter wrong-way driving incidents.



To help motorists properly identify interstate entrance and exit ramps, FDOT is increasing the amount of wrong-way signage, roadway reflectors and pavement markings. Installation of WWVDS and other driving deterrents includes detection signs at 17 off-ramps along Interstate 4 (I-4) in Orange, Seminole, and Volusia counties.

### Wrong Way Vehicle Detection Systems, first set

FDOT is installing signs at the following I-4 interchanges:

1. **Central Florida Pkwy (eastbound off-ramp only)**
2. **Sand Lake Road (State Road 482)**
3. **Lake Mary Boulevard**
4. **County Road (C.R.) 46A**
5. **S.R. 46**
6. **U.S. 17-92**
7. **Dirksen Drive**
8. **Saxon Boulevard**

Construction began September 2020. Installation of a second set of WWVDS will occur in Spring 2021 at the I-4 off ramps at S.R. 472, Orange Camp Road/C.R. 4116, S.R. 44, and U.S. 92/International Speedway Boulevard.

Motorists can expect periodic nighttime ramp closures during installation of WWVDS. To find out about construction in your area, sign up for advance construction alerts at [i4Beyond.com/Alerts](https://www.i4Beyond.com/Alerts). For more information on the WWVDS, visit [i4Beyond.com/wrongway](https://www.i4Beyond.com/wrongway).

Modifications or extensions to construction schedules may become necessary due to weather delays or other unforeseen conditions. Motorists are advised to maintain a safe speed when driving through work zones. Additionally, Florida law requires motorists to put down cellphones and other handheld devices when driving through work zones.



Florida Department of Transportation  
*Innovative, Efficient and Exceptional*

 [CFLRoads.com](https://www.CFLRoads.com)  
 [@MyFDOT\\_CFL](https://twitter.com/MyFDOT_CFL)

 [MyFDOTCFL](https://www.MyFDOTCFL.com)  
 [MYFDOT\\_CFL](https://www.MYFDOT_CFL.com)

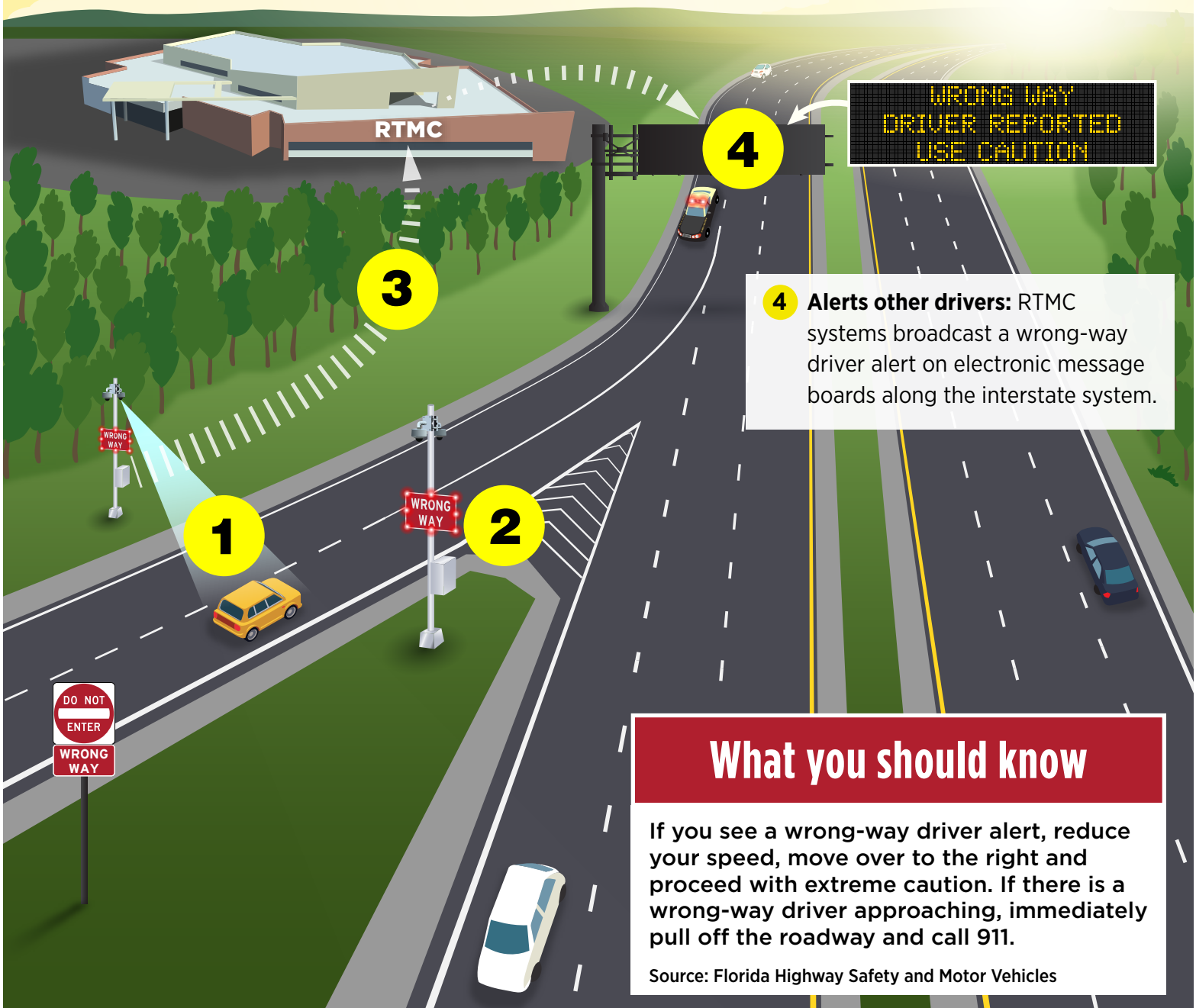
# How Wrong-Way Driving Alert Systems Work

» Learn more at [i4Beyond.com/wrongway](http://i4Beyond.com/wrongway)

**1 Detects vehicles:** Signs located on exit ramps use various technologies to detect a driver going the wrong way.

**2 Triggers lights:** Flashing lights are activated to notify the driver if he/she is traveling in the wrong direction.

**3 Notifies officials:** Radar detection sends alert immediately to FDOT's District Five Regional Transportation Management Center (RTMC) and law enforcement officials.



**4 Alerts other drivers:** RTMC systems broadcast a wrong-way driver alert on electronic message boards along the interstate system.

## What you should know

If you see a wrong-way driver alert, reduce your speed, move over to the right and proceed with extreme caution. If there is a wrong-way driver approaching, immediately pull off the roadway and call 911.

Source: Florida Highway Safety and Motor Vehicles



Florida Department of Transportation  
*Innovative, Efficient and Exceptional*

CFLRoads.com  
 @MyFDOT\_CFL

MyFDOTCFL  
 MYFDOT\_CFL