



# BUILDING A BETTER I-4

## Stay Informed:

- » Project Hotline: 844-ULT-INFO (858-4636)
- » Sign up for email and text alerts at [fdot.tips/I4Alerts](mailto:fdot.tips/I4Alerts)
- » Follow @I4Ultimate on Twitter
- » Subscribe to our monthly newsletter at [fdot.tips/I4News](mailto:fdot.tips/I4News)

## FUTURE IMPROVEMENTS AT INTERSTATE 4 (I-4) AND SAND LAKE ROAD (STATE ROAD 482) INTERCHANGE FINANCIAL ID#: 444315-1

More than 70,000 vehicles travel Sand Lake Road each day at the Interstate 4 (I-4) interchange. To accommodate current traffic and future needs, a reconfigured interchange is being designed as part of I-4 Beyond the Ultimate.

1

Reconfiguring the interchange as a diverging diamond allows left turns that do not cross oncoming traffic. Decreasing the number of conflict points increases safety, compared to a more traditional interchange. The diverging diamond interchange (DDI) eliminates left turn phases at traffic signals. It also reduces the number of traffic signal phases from four to two phases. The DDI will move almost double the traffic through the intersection in the same time. See the reverse side for more information about a DDI.

2

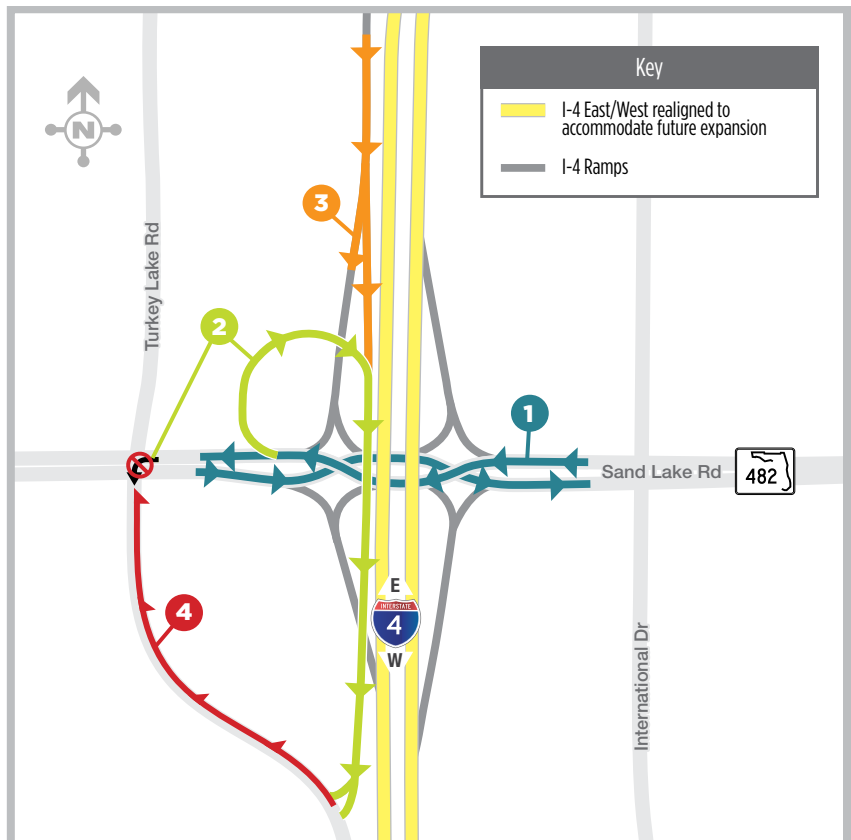
The interchange at Sand Lake Road is a modified version of the DDI because it includes a loop access ramp from westbound Sand Lake Road to Turkey Lake Road. Motorists traveling westbound on Sand Lake Road will no longer be able to turn left onto Turkey Lake Road at the existing intersection. Instead, after exiting the diverging diamond, motorists can take an access ramp on the right. The access ramp loops around, passes over Sand Lake Road and leads to south of the Phillips Crossing Shopping Center forming a new intersection with Turkey Lake Road. From the end of the access ramp, motorists can choose to travel north or south on Turkey Lake Road.

3

The westbound I-4 exit ramp (Exit 74A) separates into two ramps, one to Sand Lake Road and one to Turkey Lake Road.

4

The project adds a third lane on northbound Turkey Lake Road from the new ramp to south of Sand Lake Road.



Visit [I4Beyond.com](http://I4Beyond.com) for more information on I-4 Beyond the Ultimate designs, including an interactive map showing anticipated designs for each interchange.

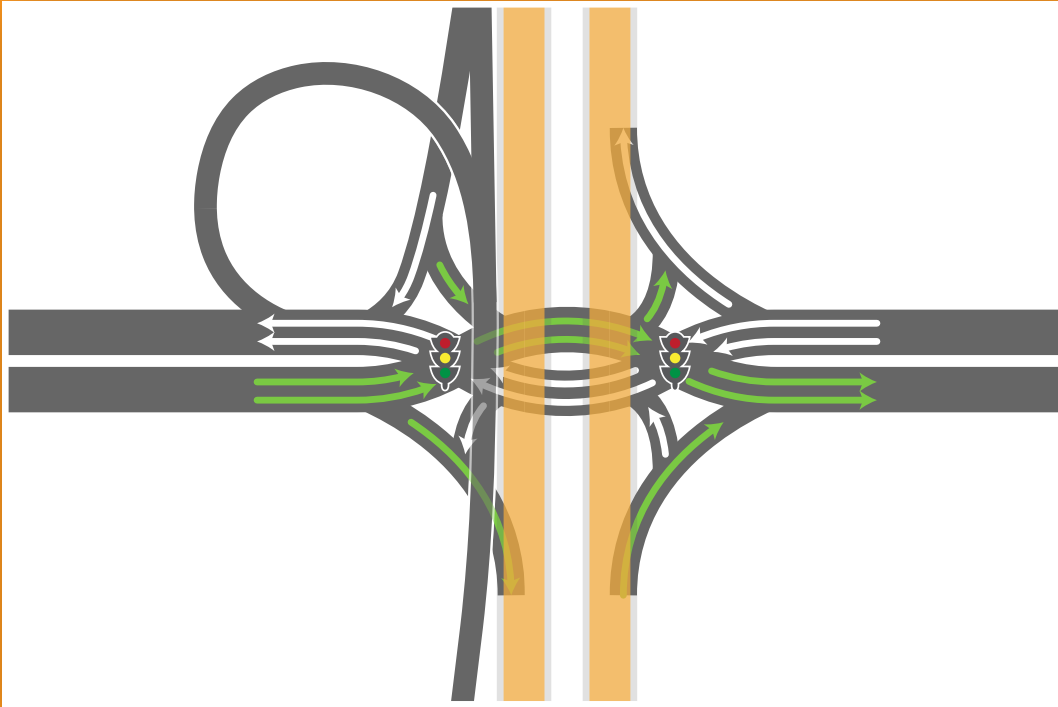


# BUILDING A BETTER I-4

## Stay Informed:

- » Project Hotline: 844-ULT-INFO (858-4636)
- » Sign up for email and text alerts at [fdot.tips/I4Alerts](http://fdot.tips/I4Alerts)
- » Follow @I4Ultimate on Twitter
- » Subscribe to our monthly newsletter at [fdot.tips/I4News](http://fdot.tips/I4News)

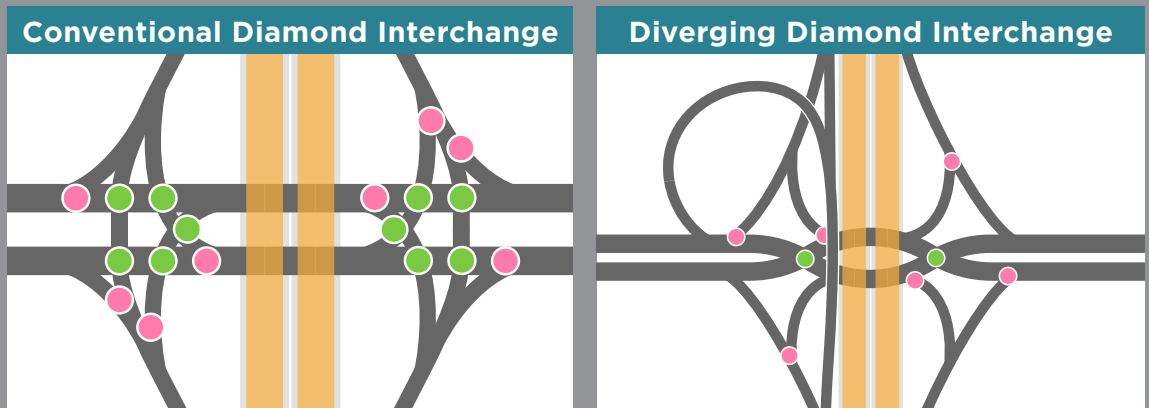
## Diverging Diamond Interchange Moves Traffic Efficiently



The diverging diamond interchange (DDI) eliminates left turn phases at traffic signals. It also reduces the number of traffic signal phases from four to two phases. The DDI will move almost double the traffic through the intersection in the same time.

## DDI Reduces Conflicts

The DDI reduces conflict points and allows left turns that do not cross oncoming traffic. When compared to a conventional diamond interchange, the DDI reduces the number of conflicts of crossing and merging traffic by more than half.



● Crossing	10	2
● Merging	8	6
<b>Total</b>	<b>18</b>	<b>8</b>

Persons with disabilities who require accommodations under the Americans with Disabilities Act or persons who require translation services (free of charge) should contact Todd Helton, Project Manager, by phone at 386-943-5207, or via email at [Todd.Helton@dot.state.fl.us](mailto:Todd.Helton@dot.state.fl.us). If you are hearing or speech impaired, please contact us by using the Florida Relay Service, 1-800-955-8771 (TDD) or 1-800-955-8770 (Voice).

Public participation is solicited without regard to race, color, national origin, age, sex, religion, disability or family status. Persons wishing to express their concerns relative to FDOT compliance with Title VI may do so by contacting Jennifer Smith, FDOT District Five Title VI Coordinator at [Jennifer.Smith2@dot.state.fl.us](mailto:Jennifer.Smith2@dot.state.fl.us).