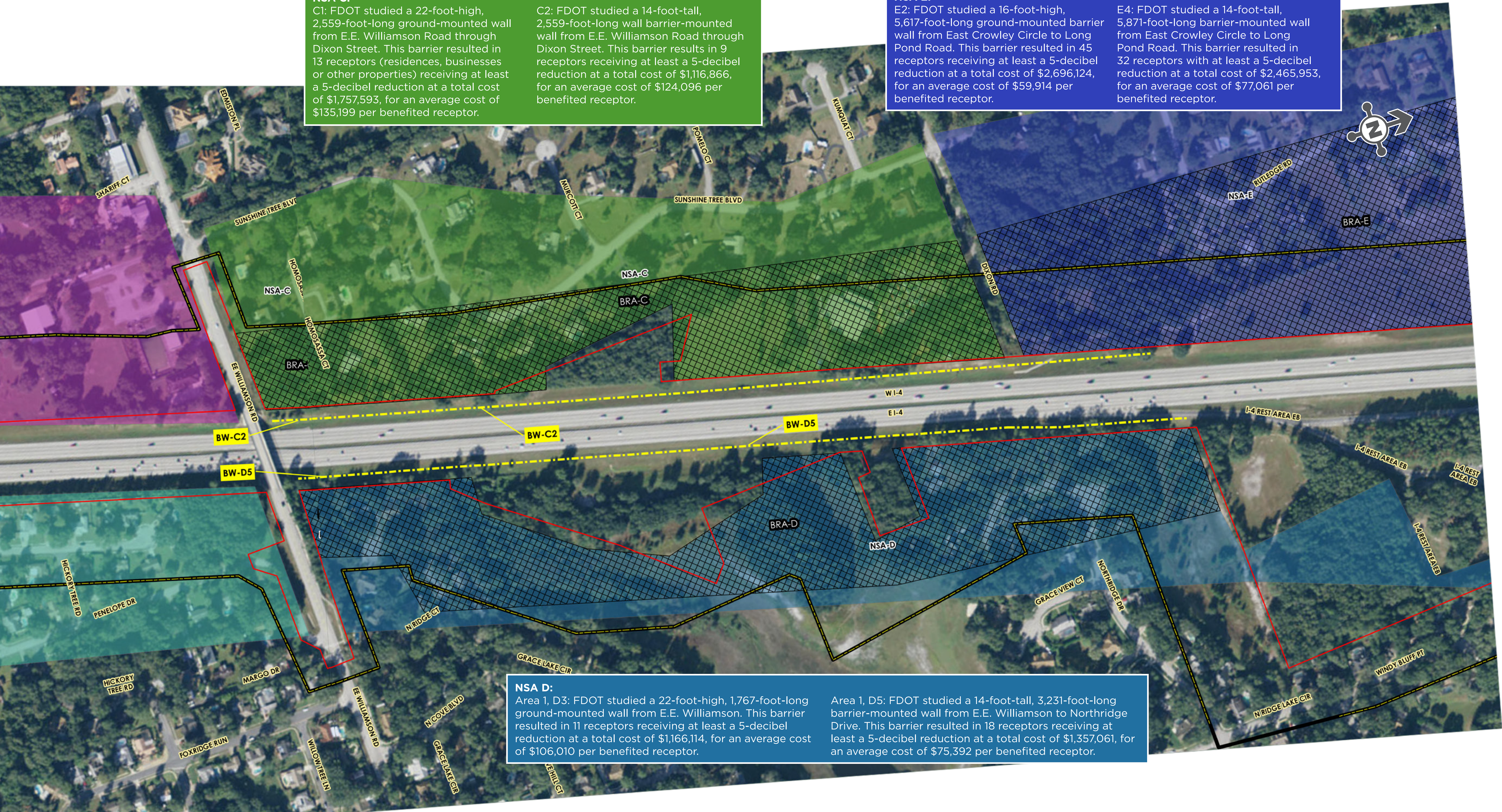


NSA C:
C1: FDOT studied a 22-foot-high, 2,559-foot-long ground-mounted wall from E.E. Williamson Road through Dixon Street. This barrier resulted in 13 receptors (residences, businesses or other properties) receiving at least a 5-decibel reduction at a total cost of \$1,757,593, for an average cost of \$135,199 per benefited receptor.
C2: FDOT studied a 14-foot-tall, 2,559-foot-long wall barrier-mounted wall from E.E. Williamson Road through Dixon Street. This barrier results in 9 receptors receiving at least a 5-decibel reduction at a total cost of \$1,116,866, for an average cost of \$124,096 per benefited receptor.

NSA E:
E2: FDOT studied a 16-foot-high, 5,617-foot-long ground-mounted barrier wall from East Crowley Circle to Long Pond Road. This barrier resulted in 45 receptors receiving at least a 5-decibel reduction at a total cost of \$2,696,124, for an average cost of \$59,914 per benefited receptor.
E4: FDOT studied a 14-foot-tall, 5,871-foot-long barrier-mounted wall from East Crowley Circle to Long Pond Road. This barrier resulted in 32 receptors with at least a 5-decibel reduction at a total cost of \$2,465,953, for an average cost of \$77,061 per benefited receptor.

NSA D:
Area 1, D3: FDOT studied a 22-foot-high, 1,767-foot-long ground-mounted wall from E.E. Williamson. This barrier resulted in 11 receptors receiving at least a 5-decibel reduction at a total cost of \$1,166,114, for an average cost of \$106,010 per benefited receptor.
Area 1, D5: FDOT studied a 14-foot-tall, 3,231-foot-long barrier-mounted wall from E.E. Williamson to Northridge Drive. This barrier resulted in 18 receptors receiving at least a 5-decibel reduction at a total cost of \$1,357,061, for an average cost of \$75,392 per benefited receptor.



I-4 Beyond the Ultimate Segment 3 Limits

- I-4 Beyond the Ultimate - Segment 3 Study Area
- I-4 Segment 3 R/W

Barrier Walls

- Modeled Walls C (Not Cost Reasonable)

Noise Sensitive Areas (NSA)

- NSA-A
- NSA-B
- NSA-C
- NSA-D
- NSA-E
- Benefitted Receiver Areas