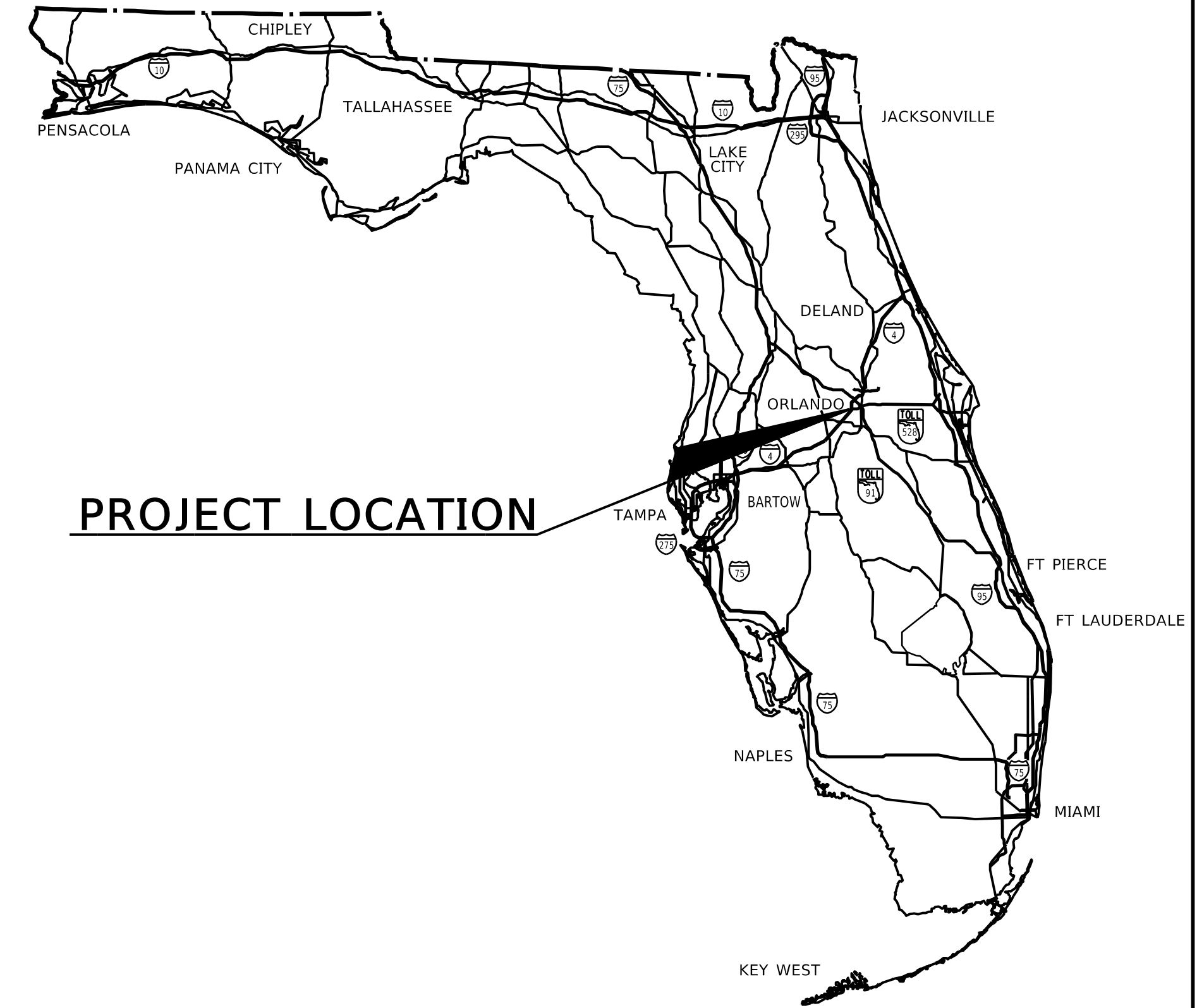


STATE OF FLORIDA
DEPARTMENT OF TRANSPORTATION

RIGHT OF WAY MAP

SECTION No 75280
FP No 441113-1
ORANGE COUNTY
DARYL CARTER PARKWAY
INTERCHANGE
IN SECTIONS 11, 14 & 15
TOWNSHIP 24 SOUTH,
RANGE 28 EAST

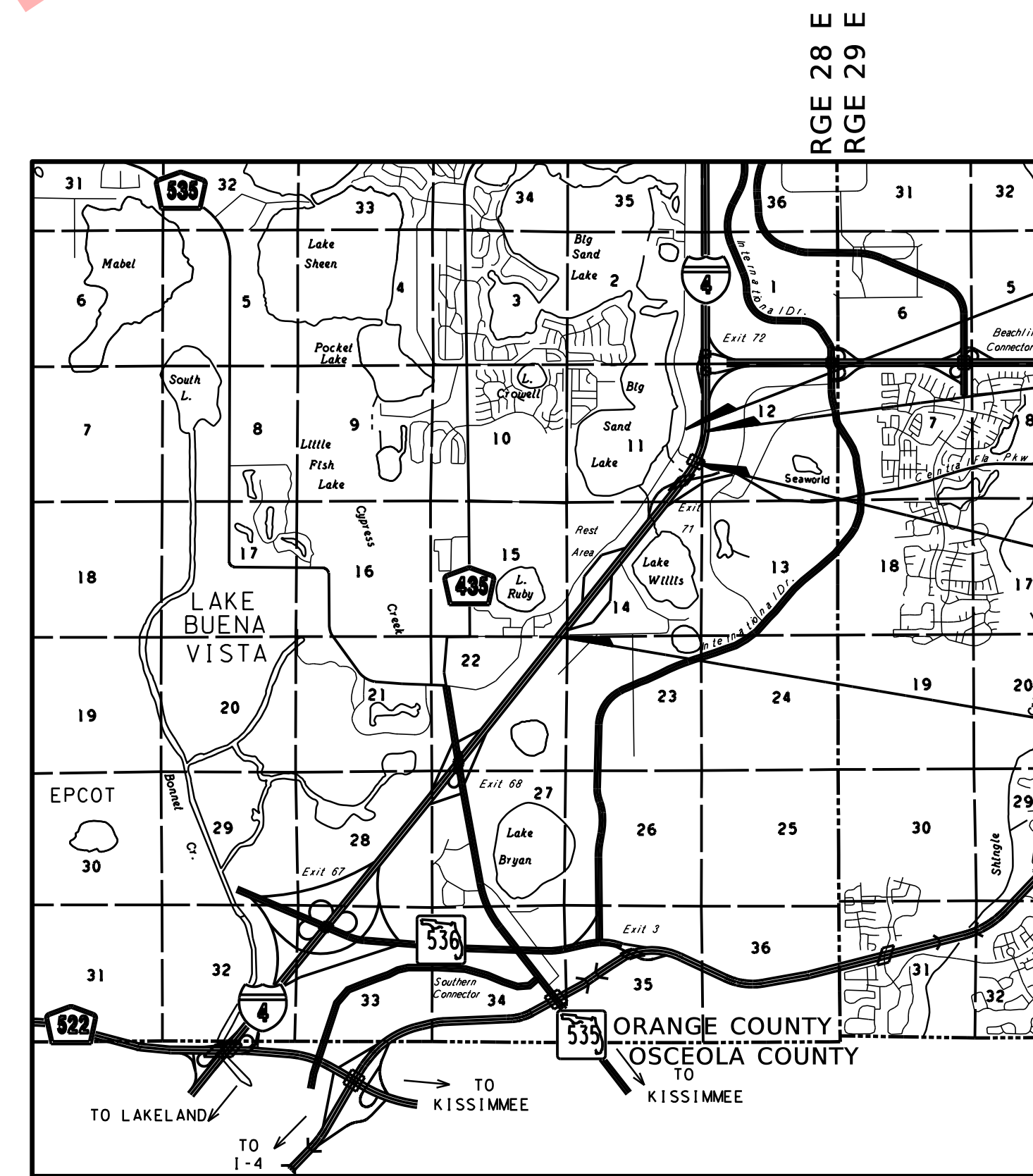


LEGEND

(AH) = AHEAD	(M3) = FDOT R/W MAP SECTION 75280-2413
AVE = AVENUE	(M4) = FDOT R/W MAP SECTION 75280-MISC
(BK) = BACK	N = NORTH OR NORTHING (STATE PLANE COORDINATE)
BL = BASELINE	N/A = NOT APPLICABLE
BLVD = BOULEVARD	ND = NAIL & DISK
C = CHORD	NTS = NOT TO SCALE
CB = CHORD BEARING	OR = OFFICIAL RECORD
CLF = CHAIN LINK FENCE	PG = PAGE
CONC = CONCRETE	PSM = PROFESSIONAL SURVEYOR AND MAPPER
COR = CORNER	PLS = PROFESSIONAL LAND SURVEYOR
CL = CENTERLINE	PL = PROPERTY LINE
(C) = CALCULATED DATA	(P) = PLAT DATA
CCR = CERTIFIED CORNER RECORD	PB = PLAT BOOK
CMON = CONCRETE MONUMENT	PC = POINT OF CURVE
CO = COUNTY	PCP = PERMANENT CONTROL POINT
CR = COUNTY ROAD	PRM = PERMANENT REFERENCE MONUMENT
(D) = DEED DATA	PI = POINT OF INTERSECTION
DB = DEED BOOK	POC = POINT ON CURVE
DE = DRAINAGE EASEMENT	POT = POINT ON TANGENT
Δ = DELTA (CENTRAL ANGLE)	PT = POINT OF TANGENCY
E = EAST OR EASTING (STATE PLANE COORDINATE)	R = RADIUS
FB = FIELD BOOK	REF = REFERENCE
FND = FOUND	RGE = RANGE
(F) = FIELD	RLS = REGISTERED LAND SURVEYOR
FDOT = FLORIDA DEPARTMENT OF TRANSPORTATION	RT = RIGHT
FLA = FLORIDA	R/W = RIGHT OF WAY
FP = FINANCIAL PROJECT	S = SOUTH
ID = IDENTIFICATION	SEC = SECTION
IP = IRON PIPE	SR = STATE ROAD
IPC = IRON PIPE AND CAP	SRD = STATE ROAD DEPARTMENT
IR = IRON ROD OR REBAR	STA = STATION NUMBER
IRC = IRON ROD AND CAP	STMP = STAMPED
L = LENGTH OF CURVE	T = TANGENT
L/A = LIMITED ACCESS	TB = TANGENT BEARING
LB = LICENSED BUSINESS	TC = TANGENT TO CURVE
LS = LICENSED SURVEYOR	TCE = TEMPORARY CONSTRUCTION EASEMENT
LT = LEFT	TLR = TURKEY LAKE ROAD
MON = MONUMENTATION/MONUMENT	TWP = TOWNSHIP
(M1) = FDOT R/W CONTROL SURVEY SECTION 75280 FP 242484-7	(TYP) = TYPICAL
(M2) = ORANGE COUNTY TURKEY LAKE ROAD R/W MAP #Y8-849B	W = WEST
	W/ = WITH
	60d = 60 PENNY NAIL

GENERAL NOTES

- THIS RIGHT OF WAY MAP IS SUPPORTED BY A RIGHT OF WAY CONTROL SURVEY, SECTION NO. 75280, F.P. 441113-1; DATED: ; PREPARED UNDER THE RESPONSIBLE CHARGE OF THOMAS J. BARRY, PROFESSIONAL SURVEYOR AND MAPPER NUMBER 4695. CERTIFIED COPIES OF THIS SURVEY ARE FILED IN THE SURVEYING AND MAPPING UNIT OF THE FLORIDA DEPARTMENT OF TRANSPORTATION, DISTRICT FIVE OFFICE, DELAND, FLORIDA.
- THE CENTERLINE OF SURVEY WAS RECOVERED BETWEEN STATION 620+83.22 AND STATION 730+00.00 AND COINCIDES WITH FLORIDA STATE PLANE COORDINATE SYSTEM, FLORIDA EAST ZONE (0901), 1983 NORTH AMERICAN DATUM, 1990 ADJUSTMENT, FROM WHICH A BEARING OF N 38°36'21" E IS DERIVED ON THE CENTERLINE OF SURVEY OF STATE ROAD 400 (INTERSTATE 4) BETWEEN PI STATION 637+90.95, SECTION 75280, FP No 242484 7 AND PC STATION 703+81.25.
- THE CURVE DATA (TANGENT AND LENGTH) AND THE CENTERLINE OF SURVEY STATIONING HAS BEEN CALCULATED BASED ON THE CENTRAL ANGLE OF THE CURVES EXPRESSED TO ONE-TENTH (0.1") OF A SECOND, AS DERIVED FROM THE COORDINATE VALUES FOR THE POINT OF INTERSECTION (PI) OF SAID CURVES. THE CENTRAL ANGLES OF THE CURVES AND ALL BEARINGS SHOWN HEREON HAVE BEEN ROUNDED TO THE NEAREST SECOND (00") PER FLORIDA DEPARTMENT OF TRANSPORTATION MAPPING STANDARDS.
- UNLESS OTHERWISE NOTED ALL THE DATA DESIGNATED AS (F) IS THE RESULT OF DIRECT FIELD MEASUREMENTS, CALCULATED FROM A CLOSED FIELD TRAVERSE OR CALCULATED FROM REDUNDANT FIELD MEASUREMENTS.
- ONLY THE FIXED IMPROVEMENTS PERTINENT TO THE PARCELS TO BE ACQUIRED ARE SHOWN HEREON, FIXED INTERIOR IMPROVEMENTS AND UNDERGROUND FOUNDATION ENCROACHMENTS, IF ANY, HAVE NOT BEEN LOCATED. THIS INFORMATION IS SUPPORTED BY DATA CONTAINED IN DATABASE ARCHIVE NAMED 4848DS.ZIP, GEOPAK DATABASE NAMED JOBSUR.GPK AND FIELD BOOKS NUMBERED 5002076, 5002078, 5002080, 5002081, 5002082, 5002088, 5002089, 5002090, 5002091, 5002990, 5002991, 5002993, 5002994, 5002996, 5002997, 5002998, 5002999, 5003000, 5003001, 5003002, 5003003, 5003004, 5003005, 5003007 AND 5003008. THIS DATA IS FILED IN THE SURVEYING AND MAPPING UNIT OF THE FLORIDA DEPARTMENT OF TRANSPORTATION, DISTRICT FIVE OFFICE, DELAND, FLORIDA.
- THE EXISTING RIGHT OF WAY LINES SHOWN HEREON ARE BASED ON THE FLORIDA DEPARTMENT OF TRANSPORTATION RIGHT OF WAY CONTROL SURVEY FOR STATE ROAD 400 (INTERSTATE 4), SECTION 75280, FP No 242484 7, CENTRAL FLORIDA PARKWAY/TURKEY LAKE ROAD INTERCHANGE, (NOW KNOWN AS CENTRAL FLORIDA PARKWAY), SECTION 75280-MISC, THE ORANGE COUNTY, FLORIDA RIGHT OF WAY MAP FOR TURKEY LAKE ROAD, CONTRACT No Y8-849B, AND RECORD TITLE OR PLAT DEDICATION.
- PROPERTY BOUNDARIES HAVE BEEN DETERMINED FROM SURVEY, PLATS OF RECORD AND RECORD TITLE.
- ALL RECORDED PLATS, OFFICIAL RECORD BOOKS AND DEED BOOKS REFERENCED HEREIN ARE RECORDED IN THE PUBLIC RECORDS OF ORANGE COUNTY, FLORIDA.
- THIS RIGHT OF WAY MAP HAS BEEN PREPARED FOR THE PURPOSE OF PREPARING LEGAL LAND DESCRIPTIONS, PREPARING ACQUISITION DOCUMENTS, MONUMENTATION, PROPERTY MANAGEMENT, AND AS AN AID IN THE APPRAISAL OF THE RIGHT OF WAY REQUIRED FOR TRANSPORTATION FACILITIES.
- ATTENTION IS DIRECTED TO THE FACT THAT THESE MAPS MAY HAVE BEEN ALTERED IN SIZE BY REPRODUCTION. THIS MUST BE CONSIDERED WHEN OBTAINING SCALED DATA.
- NORTH-SOUTH AND EAST-WEST DIMENSION TIES TO RECOVERED MONUMENTATION NEAR VARIOUS LAND BOUNDARY CORNERS SHOWN HEREON ARE BY COORDINATE DIFFERENCE. SIDE BLOCK LINE INTERSECTIONS INTO THE BASELINE OF SURVEY ARE ON THE PROJECTION OF THE SIDE BLOCK LINE, UNLESS NOTED OTHERWISE.



END R/W PROJECT
TURKEY LAKE RD
STA 157+69.00

END R/W PROJECT
SR 400 (I-4)
STA 713+82.08

BEGIN R/W PROJECT
TURKEY LAKE RD
STA 146+14.36 =
C SURVEY
SR 400 (I-4)
STA 708+00.10

BEGIN R/W PROJECT
SR 400 (I-4)
STA 620+83.22

TWP 24 S
TWP 25 S

NORTH

SHEET INDEX	
1	COVER SHEET
2	KEY SHEET
3-6	DETAIL SHEETS
7	REFERENCE SHEET
TABLE OF OWNERSHIP SHEET	

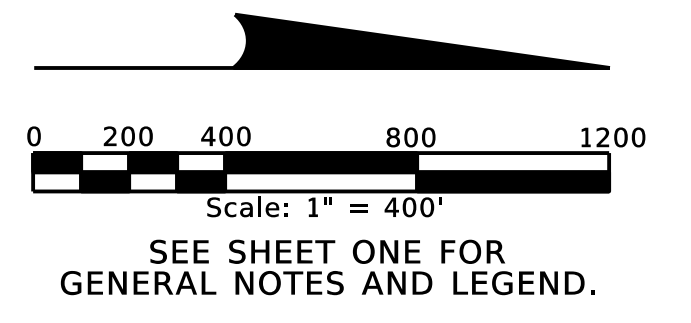
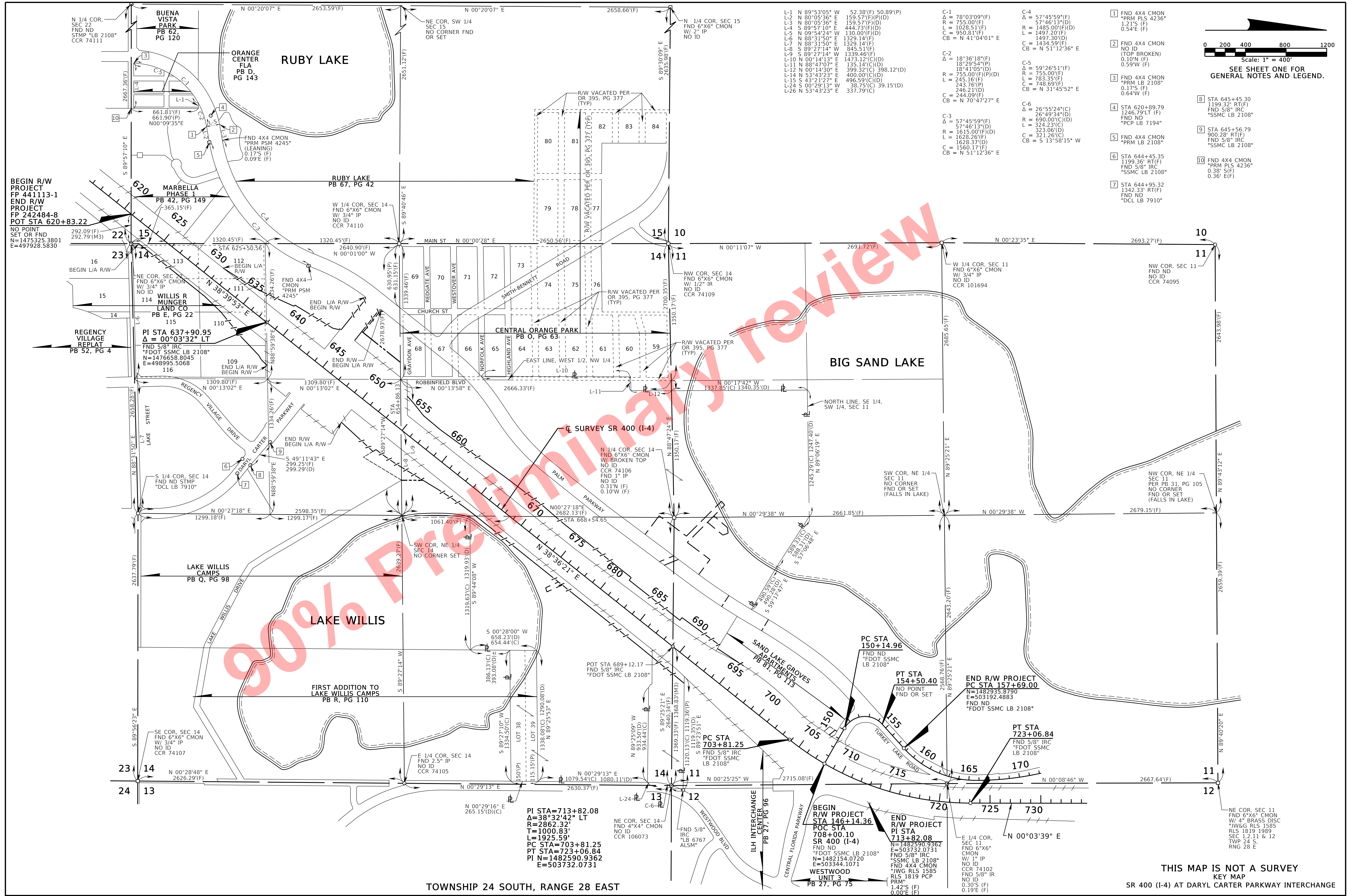
TOPO LEGEND

BLDG = BUILDING	SWLK = SIDEWALK
BW/BWF = BARB WIRE FENCE	WFRM = WOOD FRAME
CBS = CONCRETE BLOCK STRUCTURE	W.I.F. = WROUGHT IRON FENCE
CCBN = CONCRETE CATCH BASIN	WS = WOOD SHED
CG = CURB & GUTTER	◇ = UTILITY POLE
COMM = COMMERCIAL	---> = GUY ANCHOR
CONCW = CONCRETE/BLOCK WALL	▭ = SERVICE CABINET
CLF = CHAIN LINK FENCE	⊙ = SIGN
CMP = CORRUGATED METAL PIPE	⊙-⊙ = LIGHT POLE STANDARD
CSL = CONCRETE SLAB	⊙ = STANDPIPE AND FAUCET
DWYA = DRIVEWAY ASPHALT	⊙ = FLOOD LIGHT
DWYC = DRIVEWAY CONCRETE	⊙ = SPRINKLER HEAD
DWYD = DRIVEWAY DIRT	⊙ = MAILBOX
DWYG = DRIVEWAY GRAVEL	⊙ = ELECTRIC PEDESTAL
E/P = EDGE OF ASPHALT/PAVEMENT	⊙ = POST
H.R. = HANDRAIL	⊙ = PILING
HWF = HOGWIRE FENCE	⊙ = FLAG POLE
MES = MITERED END SECTION	
MONW = MONITORING WELL	
MSS = MULTIPLE SUPPORT SIGN	
PVC = POLYVINYL CHLORIDE	
RCP = REINFORCED CONCRETE PIPE	
RES. = RESIDENTIAL	
SEW = STRAIGHT END WALL	
SPL = SPILLWAY	
SWF = STOCK WIRE FENCE	
WF = WOOD FENCE	
⊙ = TELEPHONE PEDESTAL	
⊙ = TELEPHONE BOOTH	

THIS MAP IS NOT A SURVEY

SR 400 (I-4) AT DARYL CARTER PARKWAY INTERCHANGE

RIGHT OF WAY MAP	FLORIDA DEPARTMENT OF TRANSPORTATION SURVEYING AND MAPPING	APPROVED BY _____ DATE _____	BY _____ DATE _____	FED. PROJ. _____	SECTION 75280	MAPS PREPARED BY: AECOM 315 EAST ROBINSON ST. SUITE 245 ORLANDO, FLORIDA 32801-1949 407-422-0353 LB #7860	DATA SOURCE: SEE GENERAL NOTES ABOVE. SCALE: N/A
		REVISION BY DATE REVISION BY DATE	PRELIM D. KING 9-26-2017 FINAL M. MILLER 7-11-2018 CHECKED T. BARRY 7-11-2018	STATE ROAD NO. 400	ORANGE COUNTY	F.P. NO. 441113-1	SHEET 1 OF 8

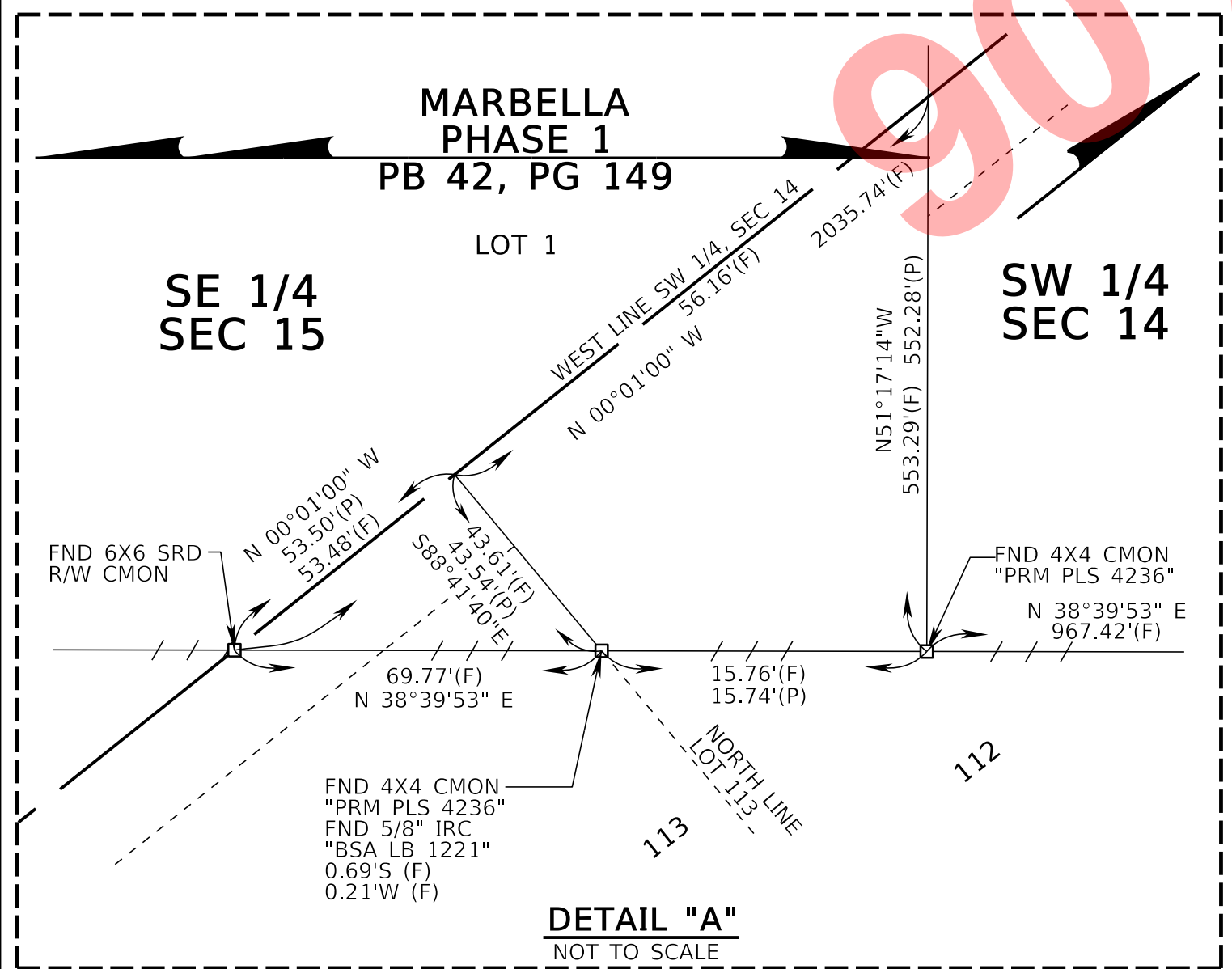
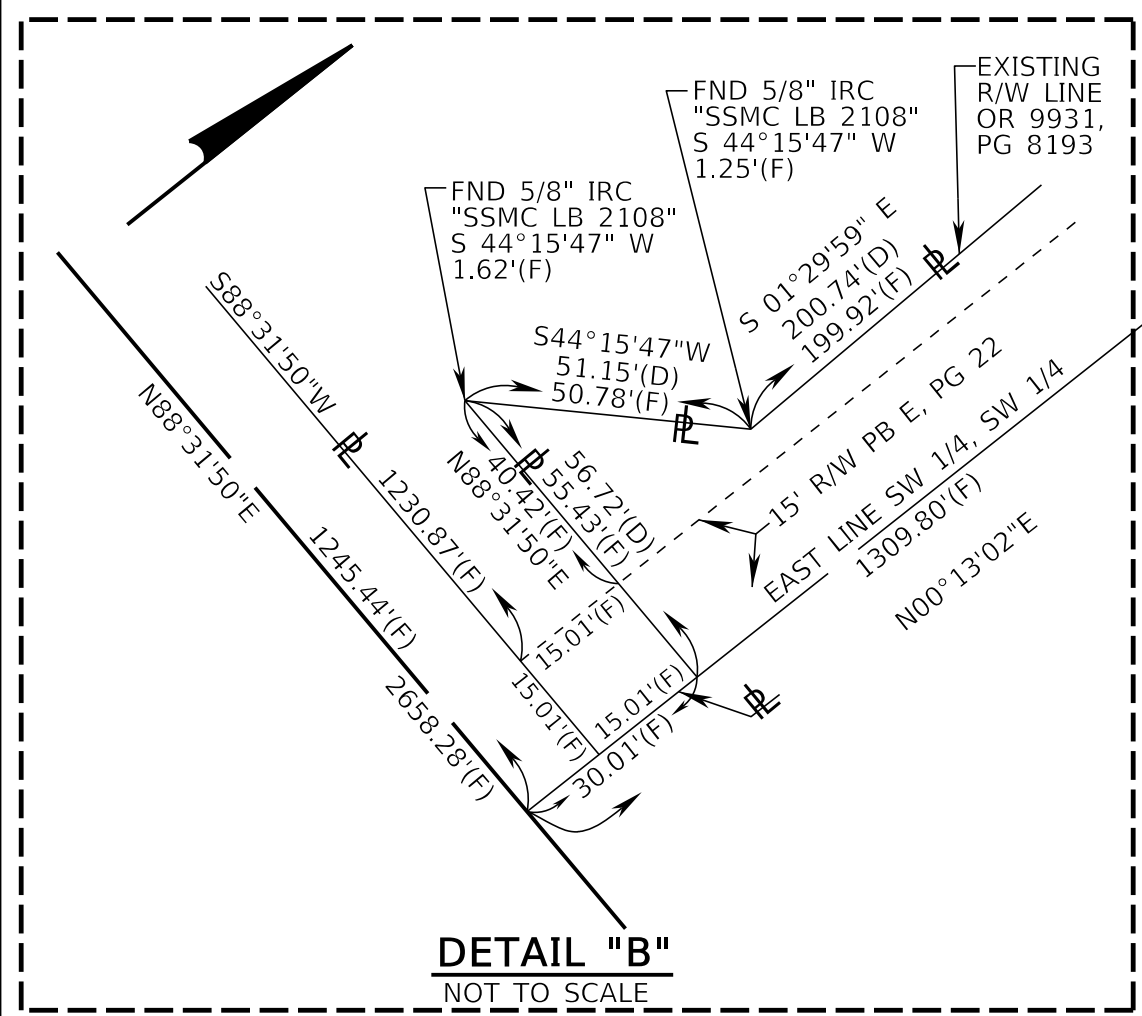
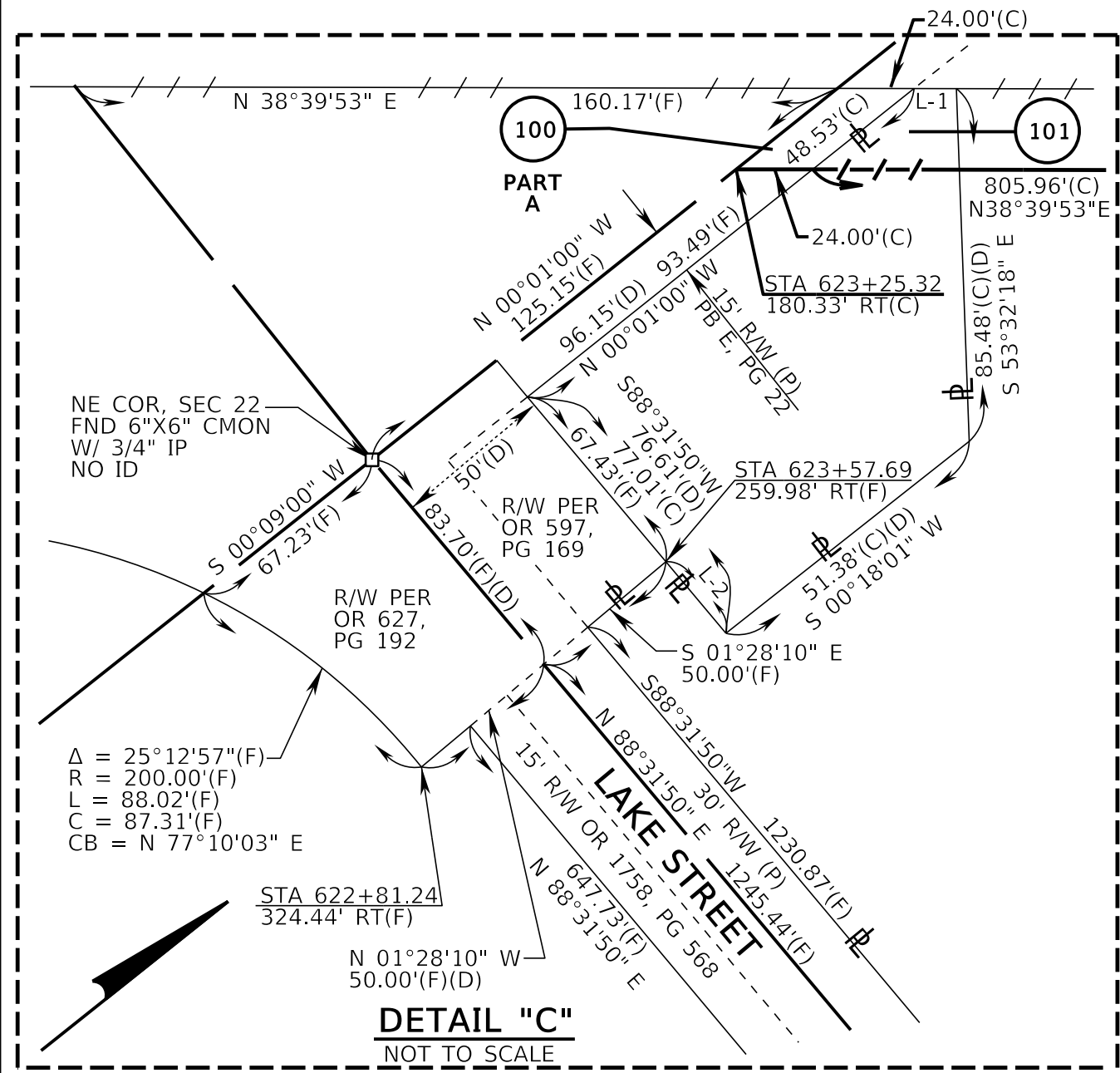
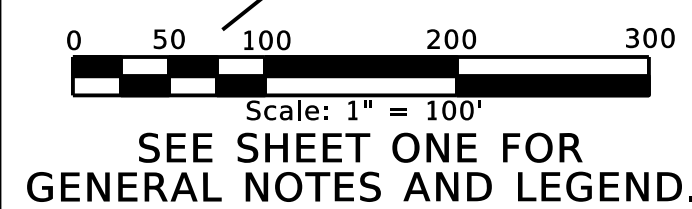
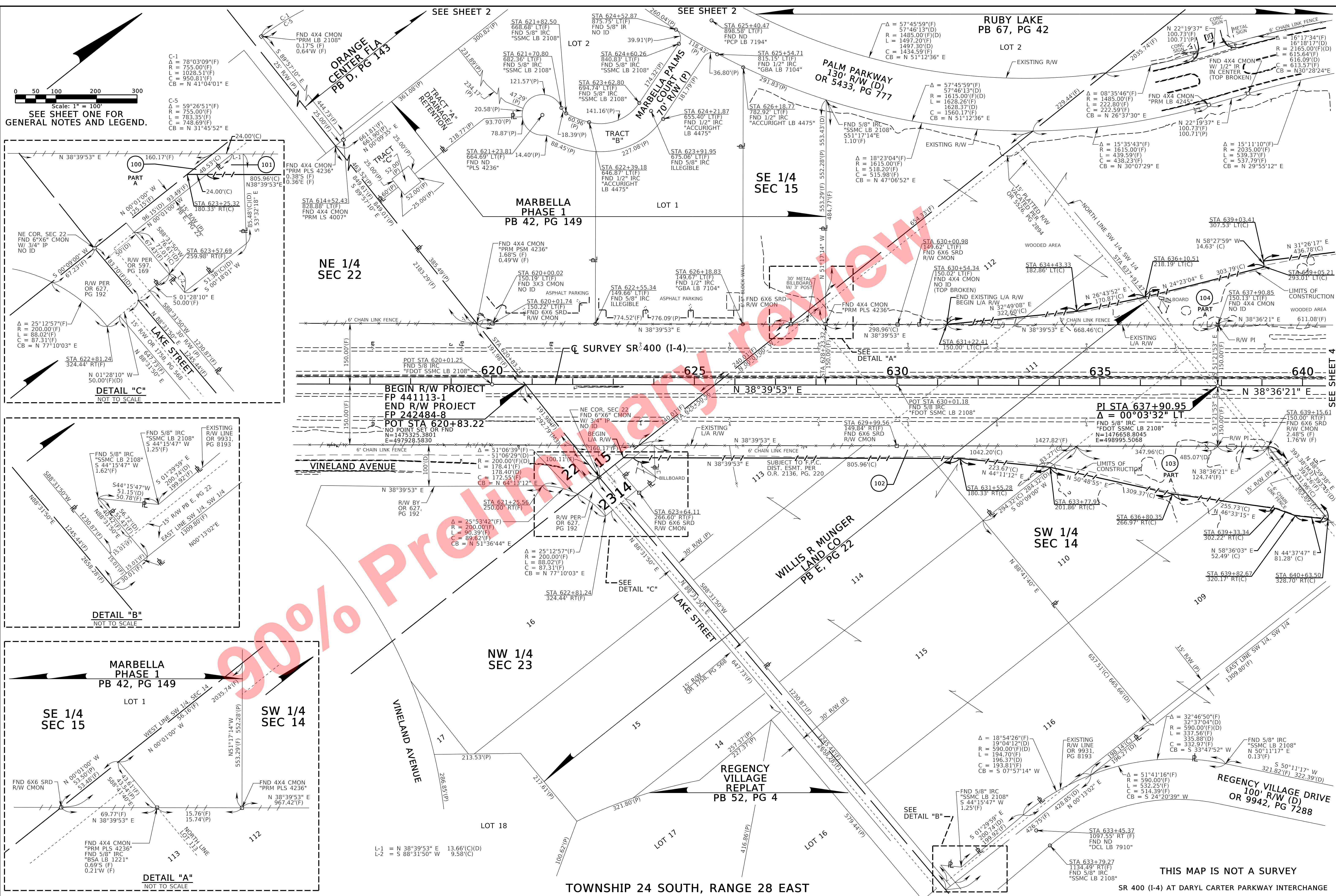


- SEE SHEET ONE FOR GENERAL NOTES AND LEGEND.
- 1 FND 4X4 CMON "PRM PLS 4236" 1.21'S (F) 0.54'E (F)
 - 2 FND 4X4 CMON NO ID (TOP BROKEN) 0.10'N (F) 0.59'W (F)
 - 3 FND 4X4 CMON "PRM LB 2108" 0.17'S (F) 0.64'W (F)
 - 4 STA 620+89.79 1246.79'LT (F) FND 5/8" IRC "SSMC LB 2108"
 - 5 STA 645+56.79 FND 5/8" IRC "PRM LB 2108"
 - 6 STA 644+45.35 1199.36' RT(F) FND 5/8" IRC "SSMC LB 2108"
 - 7 STA 644+95.32 1342.33' RT(F) FND ND "DCL LB 7910"
 - 8 STA 645+45.30 1199.32' RT(F) FND 5/8" IRC "SSMC LB 2108"
 - 9 STA 645+56.79 FND 5/8" IRC "PRM LB 2108"
 - 10 FND 4X4 CMON "PRM PLS 4236" 0.38' S(F) 0.36' E(F)

THIS MAP IS NOT A SURVEY
KEY MAP
SR 400 (I-4) AT DARYL CARTER PARKWAY INTERCHANGE

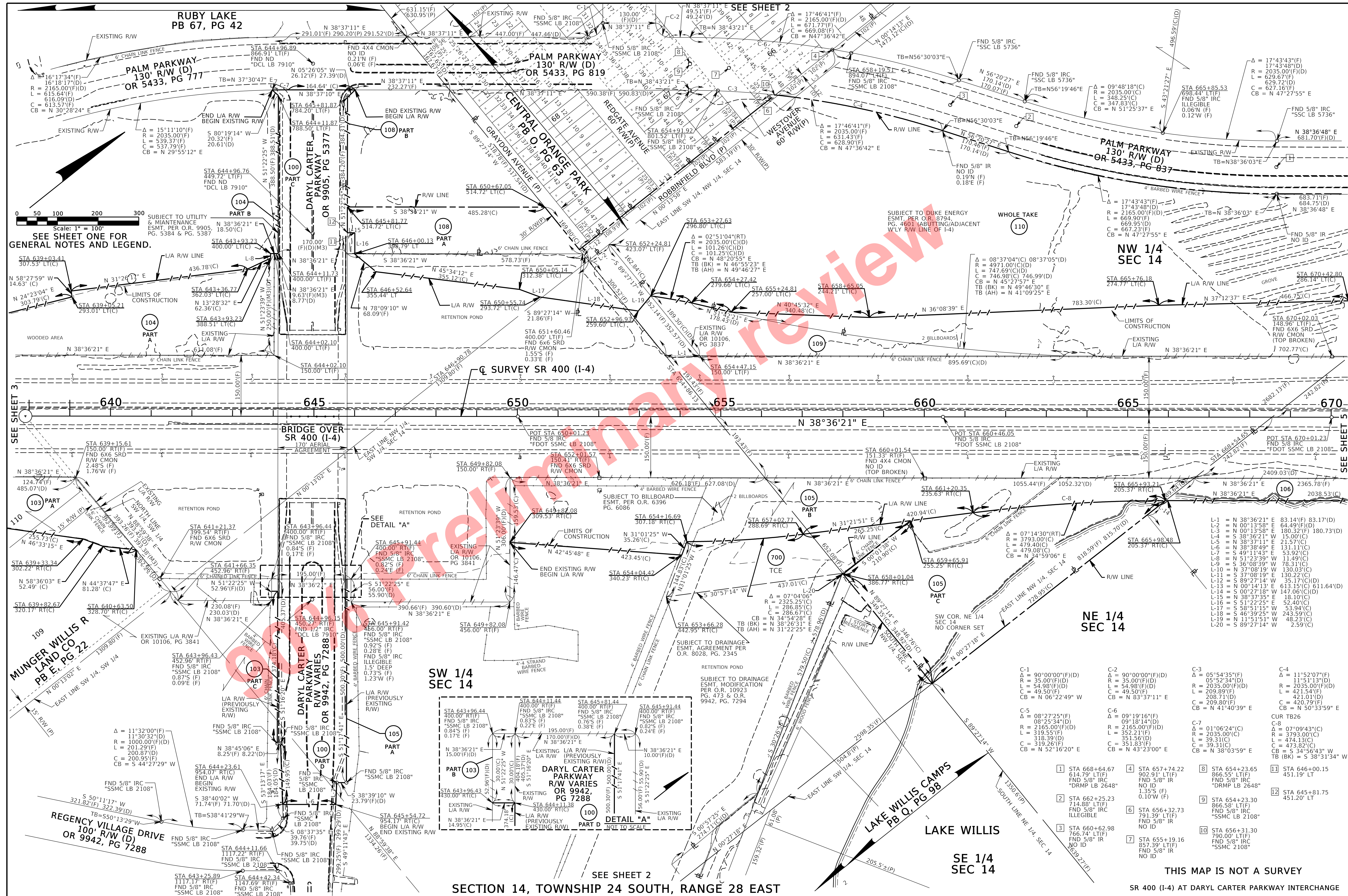
RIGHT OF WAY MAP		FLORIDA DEPARTMENT OF TRANSPORTATION SURVEYING AND MAPPING		APPROVED BY _____ DATE _____		BY D. KING DATE 9-26-2017		FED. PROJ. STATE ROAD NO. 400		SECTION 75280		MAPS PREPARED BY: AECOM 315 EAST ROBINSON ST. SUITE 245 ORLANDO, FLORIDA 32801-1949 407-422-0353 LB #7860		DATA SOURCE: SEE GENERAL NOTES ON SHEET ONE. SCALE: 1" = 400'	
						PRELIM		STATE ROAD NO. 400		ORANGE COUNTY		F.P. NO. 441113-1		SHEET 2 OF 8	

07/18/2018



RIGHT OF WAY MAP	FLORIDA DEPARTMENT OF TRANSPORTATION SURVEYING AND MAPPING	APPROVED BY	DATE	BY	DATE	FED. PROJ. STATE ROAD NO. 400	SECTION 75280 ORANGE COUNTY	MAPS PREPARED BY: AECOM 150 NORTH ORANGE AVE, SUITE 200 ORLANDO, FLORIDA 32801-1949 407-422-0353 LB #7860	DATA SOURCE: SEE GENERAL NOTES ON SHEET ONE. SCALE: 1" = 100'
		REVISION	BY	DATE	REVISION				

07/18/2018



Scale: 1" = 100'
 SEE SHEET ONE FOR GENERAL NOTES AND LEGEND.

SEE SHEET 3

SEE SHEET 5

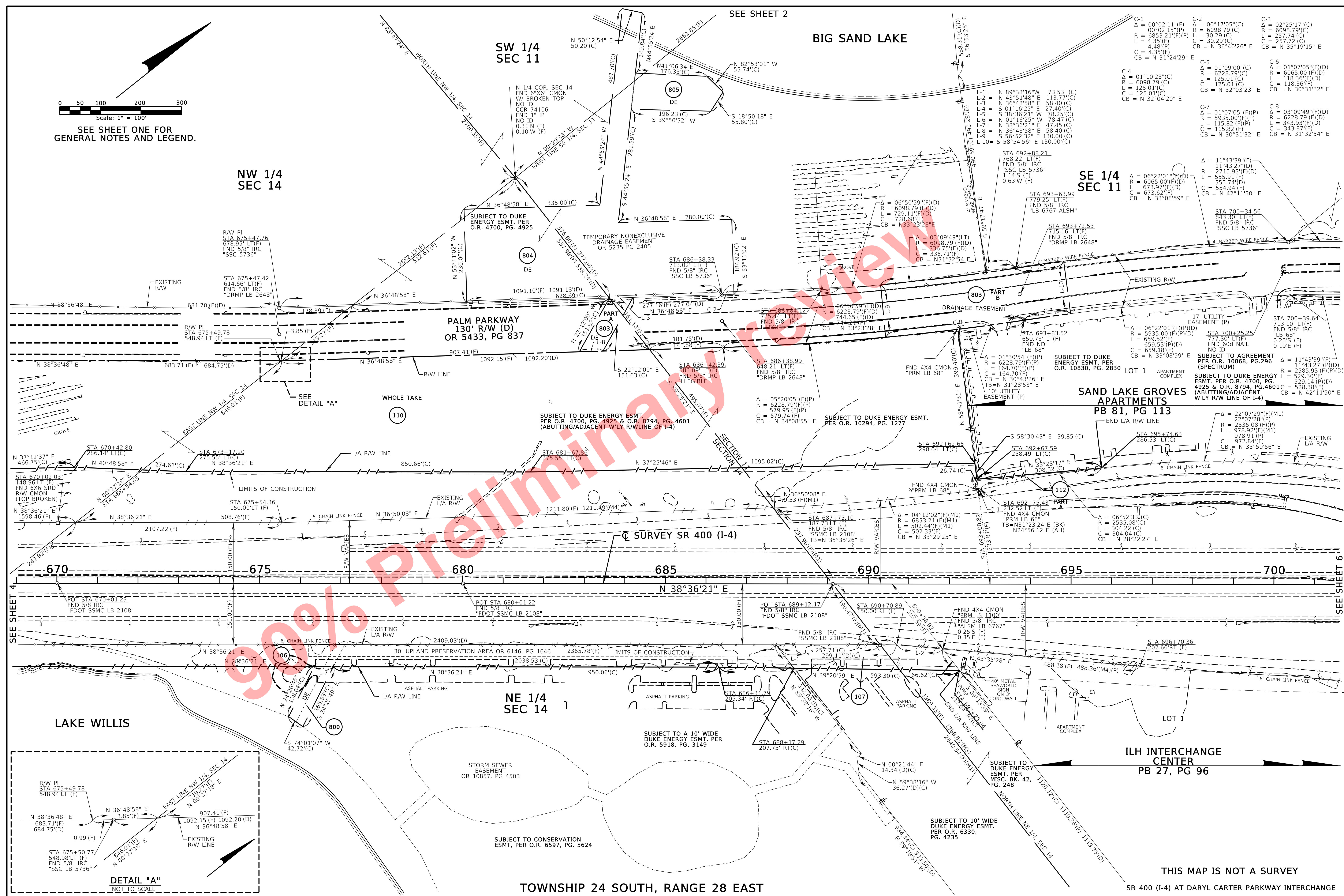
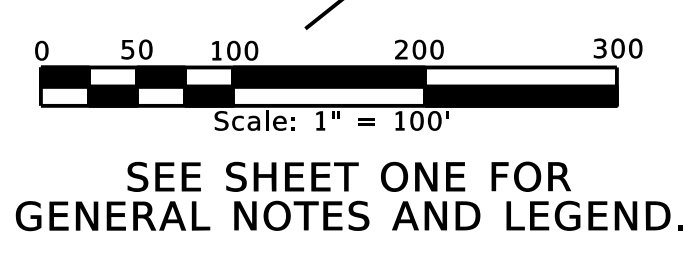
SECTION 14, TOWNSHIP 24 SOUTH, RANGE 28 EAST

SR 400 (I-4) AT DARYL CARTER PARKWAY INTERCHANGE

RIGHT OF WAY MAP	FLORIDA DEPARTMENT OF TRANSPORTATION SURVEYING AND MAPPING	APPROVED BY	DATE	BY	DATE	FED. PROJ.	SECTION 75280	MAPS PREPARED BY:	DATA SOURCE:
				PRELIM	D. KING	9-26-2017	STATE ROAD NO. 400	ORANGE COUNTY	AECOM 150 NORTH ORANGE AVE., SUITE 200 ORLANDO, FLORIDA 32801-1949 407-422-0353 LB #7860
		REVISION	BY	DATE	REVISION	BY	DATE	F.P. NO. 441113-1	SHEET 4 OF 8

THIS MAP IS NOT A SURVEY

07/18/2018



FLORIDA DEPARTMENT OF TRANSPORTATION
SURVEYING AND MAPPING

APPROVED BY	DATE	BY	DATE
		PRELIM	D. KING 9-26-2017
		FINAL	M. MILLER 7-11-2018
		CHECKED	T. BARRY 7-11-2018

FED. PROJ. STATE ROAD NO. 400

SECTION 75280
ORANGE COUNTY

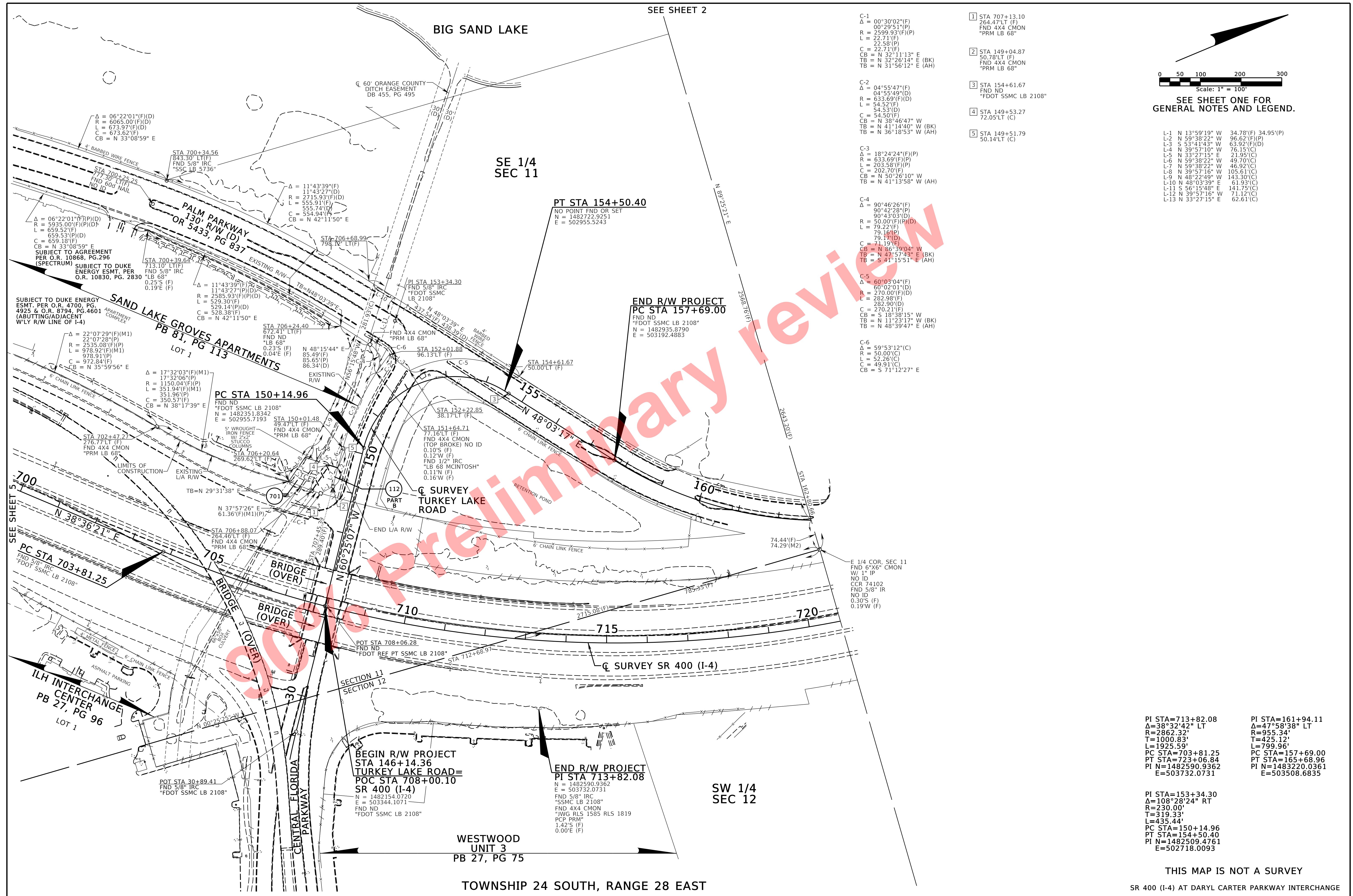
MAPS PREPARED BY: AECOM
150 NORTH ORANGE AVE, SUITE 200
ORLANDO, FLORIDA 32801-1949
407-422-0353 LB #7860
F.P. NO. 44113-1

DATA SOURCE: NOTES ON SHEET ONE.
SCALE: 1" = 100'
SHEET 5 OF 8

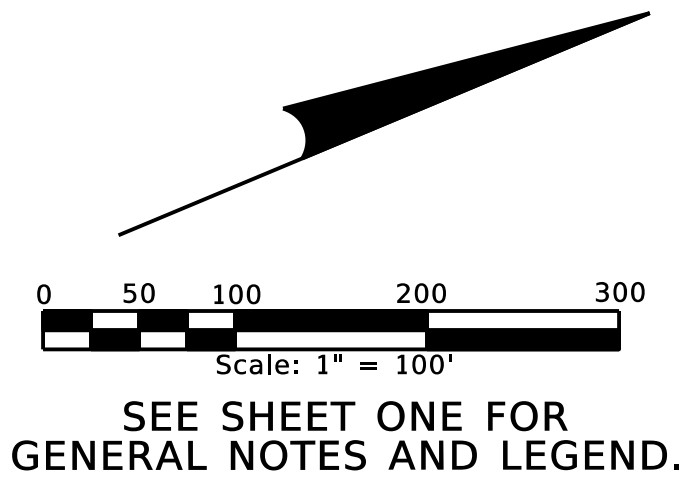
THIS MAP IS NOT A SURVEY

SR 400 (I-4) AT DARYL CARTER PARKWAY INTERCHANGE

07/18/2018



SEE SHEET 2



SEE SHEET ONE FOR GENERAL NOTES AND LEGEND.

- 1 STA 707+13.10
264.47'LT (F)
FND 4X4 CMON
"PRM LB 68"
- 2 STA 149+04.87
50.78'LT (F)
FND 4X4 CMON
"PRM LB 68"
- 3 STA 154+61.67
FND ND
"FDOT SSMC LB 2108"
- 4 STA 149+53.27
72.05'LT (C)
- 5 STA 149+51.79
50.14'LT (C)

- C-1
Δ = 00°30'02"(F)
00°29'51"(P)
R = 2599.93'(F)(P)
L = 22.71'(F)
22.58'(P)
C = 22.71'(F)
CB = N 32°11'13" E
TB = N 32°26'14" E (BK)
TB = N 31°56'12" E (AH)
- C-2
Δ = 04°55'47"(F)
04°55'49"(D)
R = 633.69'(F)(D)
L = 54.52'(F)
54.53'(D)
C = 54.50'(F)
CB = N 38°46'47" W
TB = N 41°14'40" W (BK)
TB = N 36°18'53" W (AH)
- C-3
Δ = 18°24'24"(F)(P)
R = 633.69'(F)(P)
L = 203.58'(F)(P)
C = 202.70'(F)
CB = N 50°26'10" W
TB = N 41°13'58" W (AH)
- C-4
Δ = 90°46'26"(F)
90°42'28"(P)
R = 50.00'(F)(D)
L = 79.22'(F)
79.16'(P)
C = 79.17'(D)
CB = N 86°39'04" W
TB = N 47°57'43" E (BK)
TB = S 41°15'51" E (AH)
- C-5
Δ = 60°03'04"(F)
60°02'01"(D)
R = 270.00'(F)(D)
L = 282.98'(F)
C = 270.21'(F)
CB = S 18°38'15" W
TB = N 11°23'17" W (BK)
TB = N 48°39'47" E (AH)
- C-6
Δ = 59°53'12"(C)
R = 50.00'(C)
L = 52.26'(C)
C = 49.91'(C)
CB = S 71°12'27" E

- L-1 N 13°59'19" W 34.78'(F) 34.95'(P)
- L-2 N 59°38'22" W 96.62'(F)(P)
- L-3 S 53°41'43" W 63.92'(F)(D)
- L-4 N 39°57'10" W 76.15'(C)
- L-5 N 33°27'15" E 21.95'(C)
- L-6 N 59°38'22" W 49.70'(C)
- L-7 N 59°38'22" W 46.92'(C)
- L-8 N 39°57'16" W 105.61'(C)
- L-9 N 48°22'49" W 143.30'(C)
- L-10 N 48°03'39" E 61.93'(C)
- L-11 S 56°15'48" E 141.75'(C)
- L-12 N 39°57'16" W 71.12'(C)
- L-13 N 33°27'15" E 62.61'(C)

- PI STA=713+82.08
Δ=38°32'42" LT
R=2862.32'
T=1000.83'
L=1925.59'
PC STA=703+81.25
PT STA=723+06.84
PI N=1482590.9362
E=503732.0731
- PI STA=161+94.11
Δ=47°58'38" LT
R=955.34'
T=425.12'
L=799.96'
PC STA=157+69.00
PT STA=165+68.96
PI N=1483220.0361
E=503508.6835

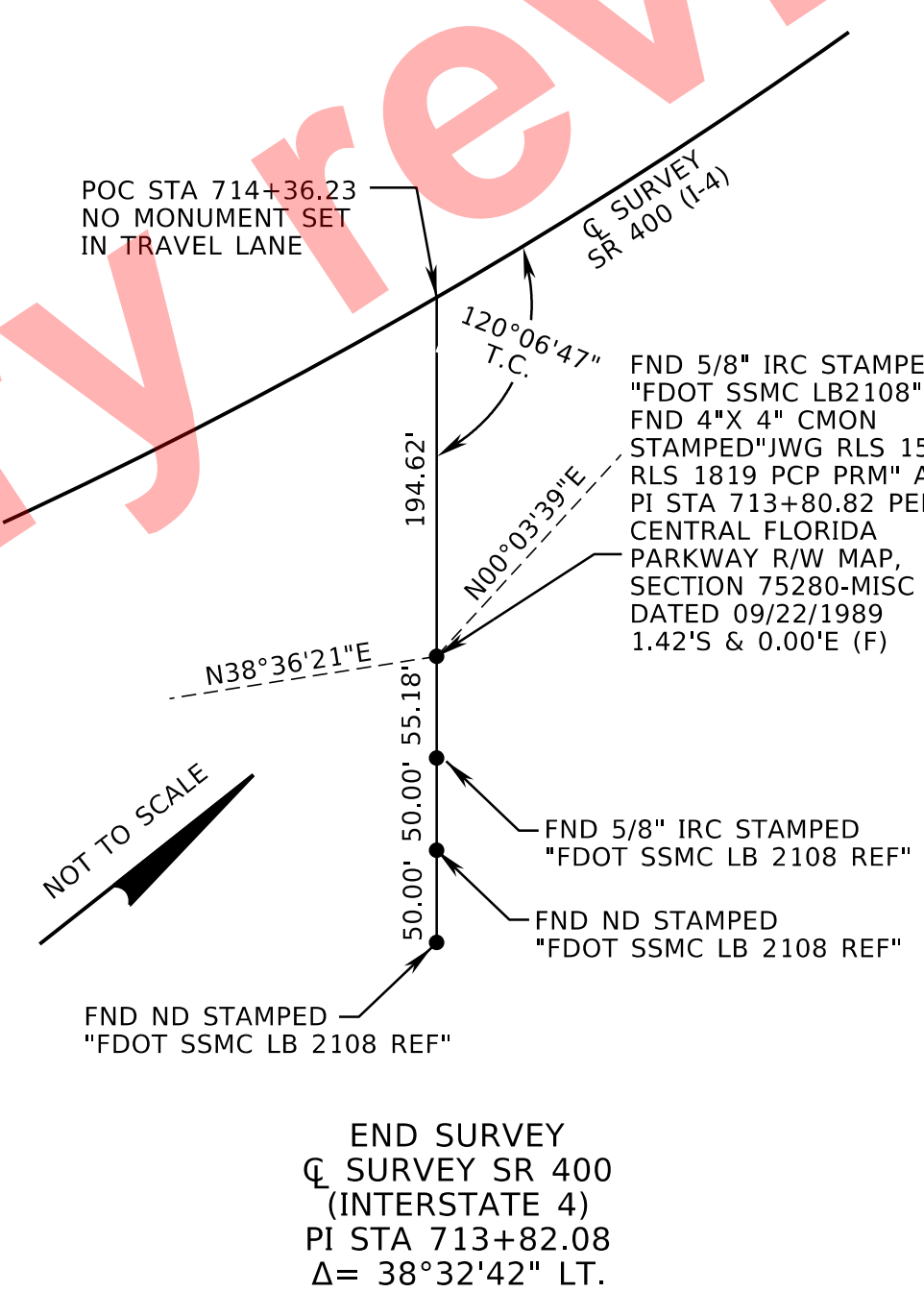
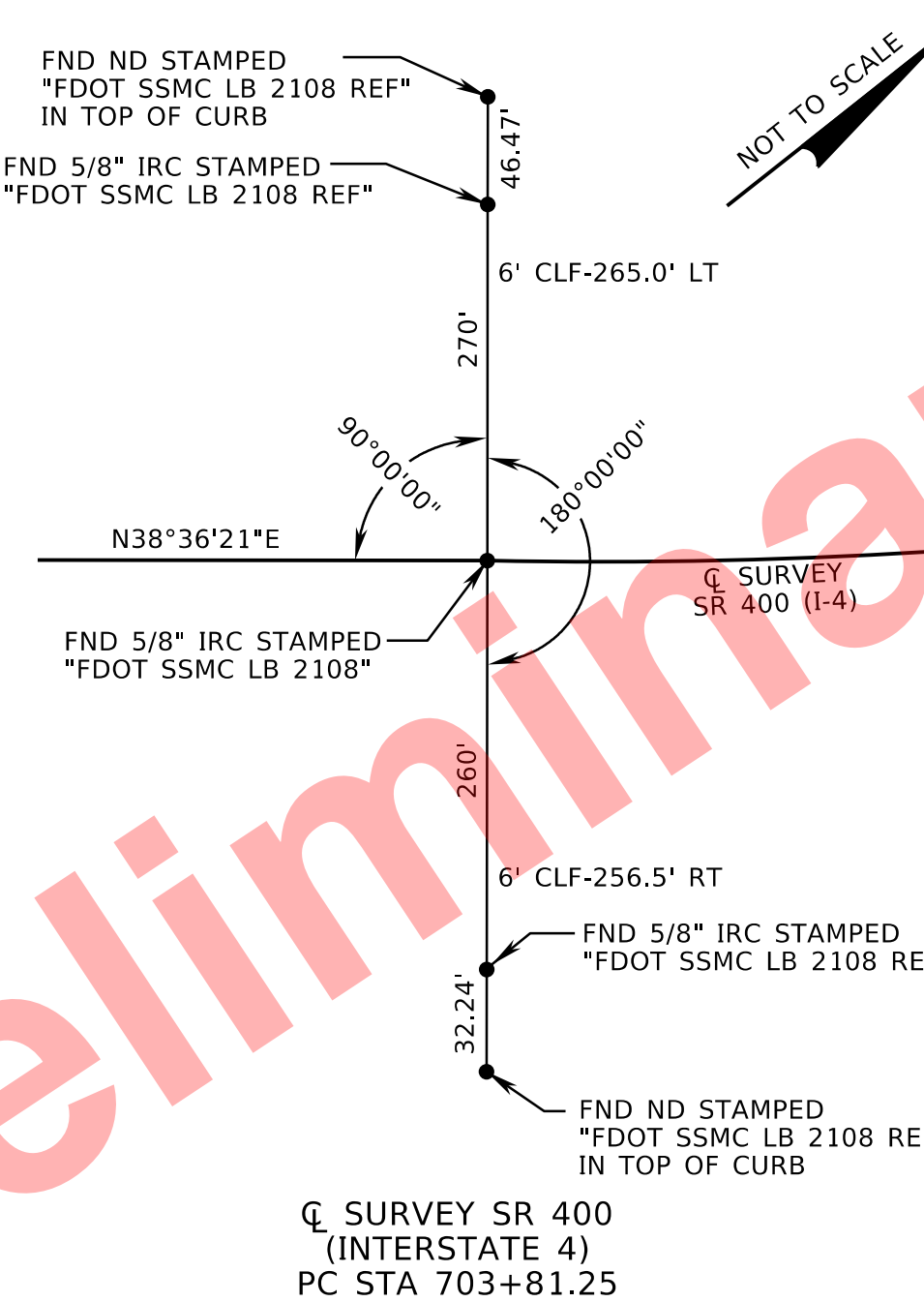
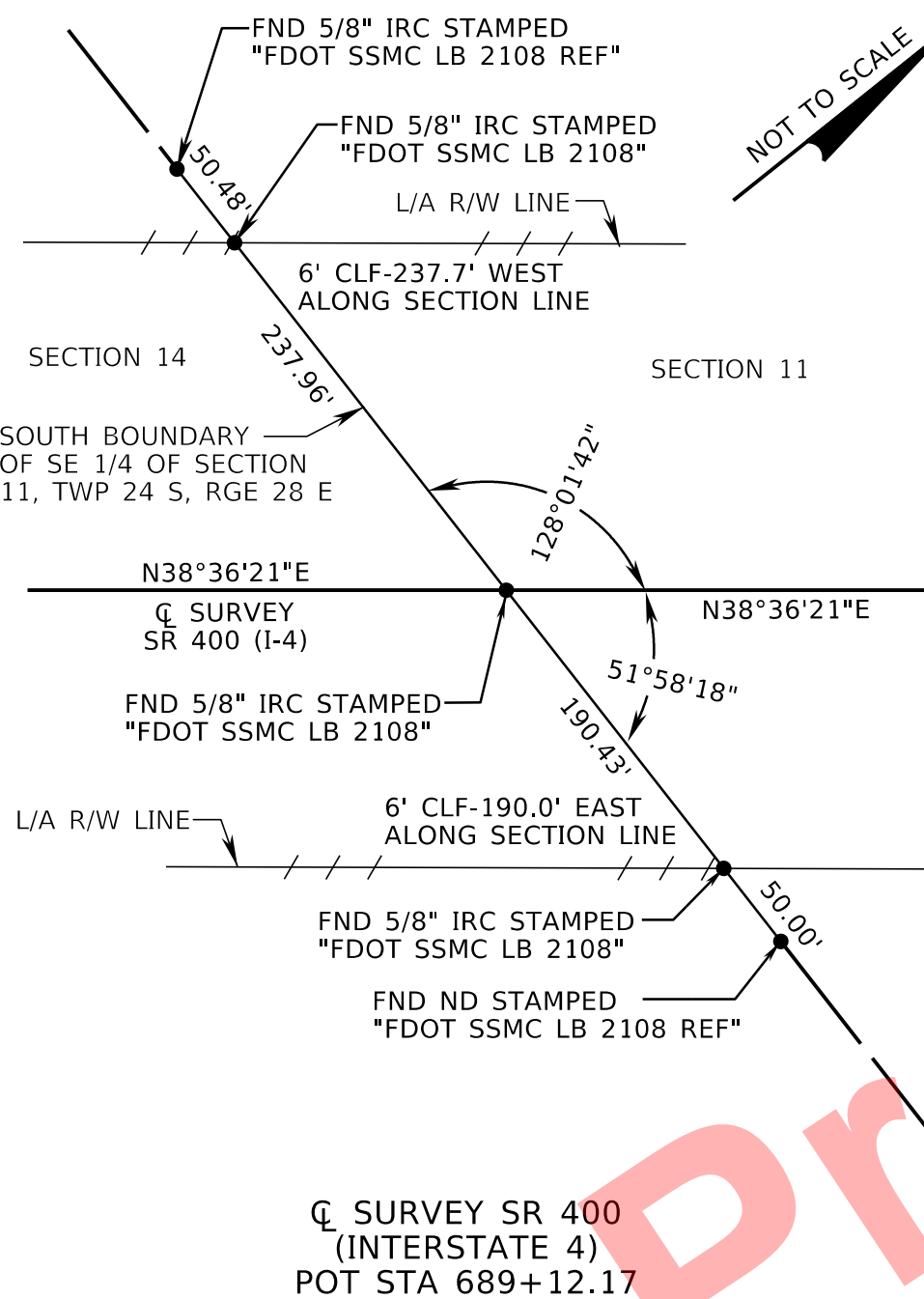
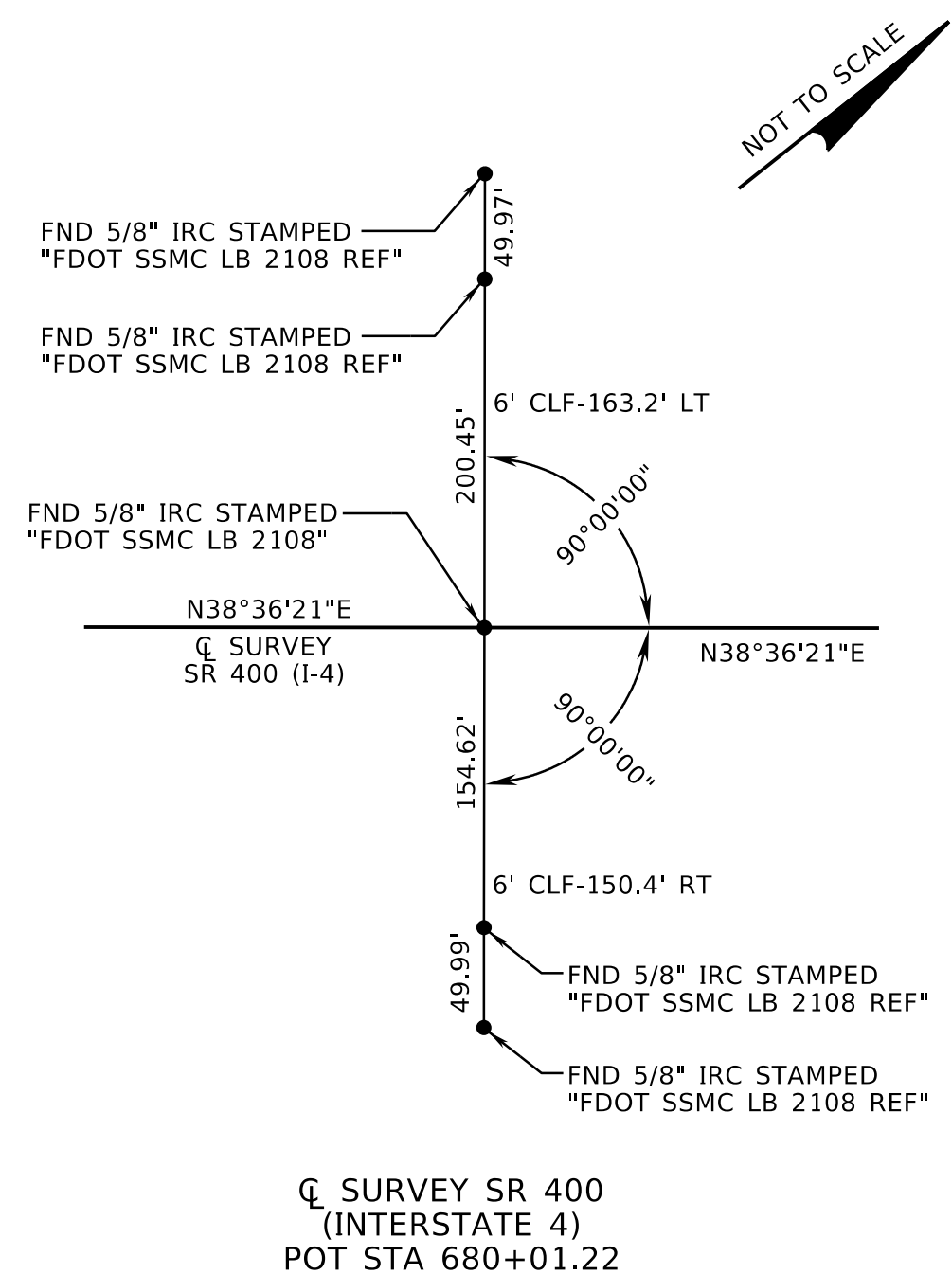
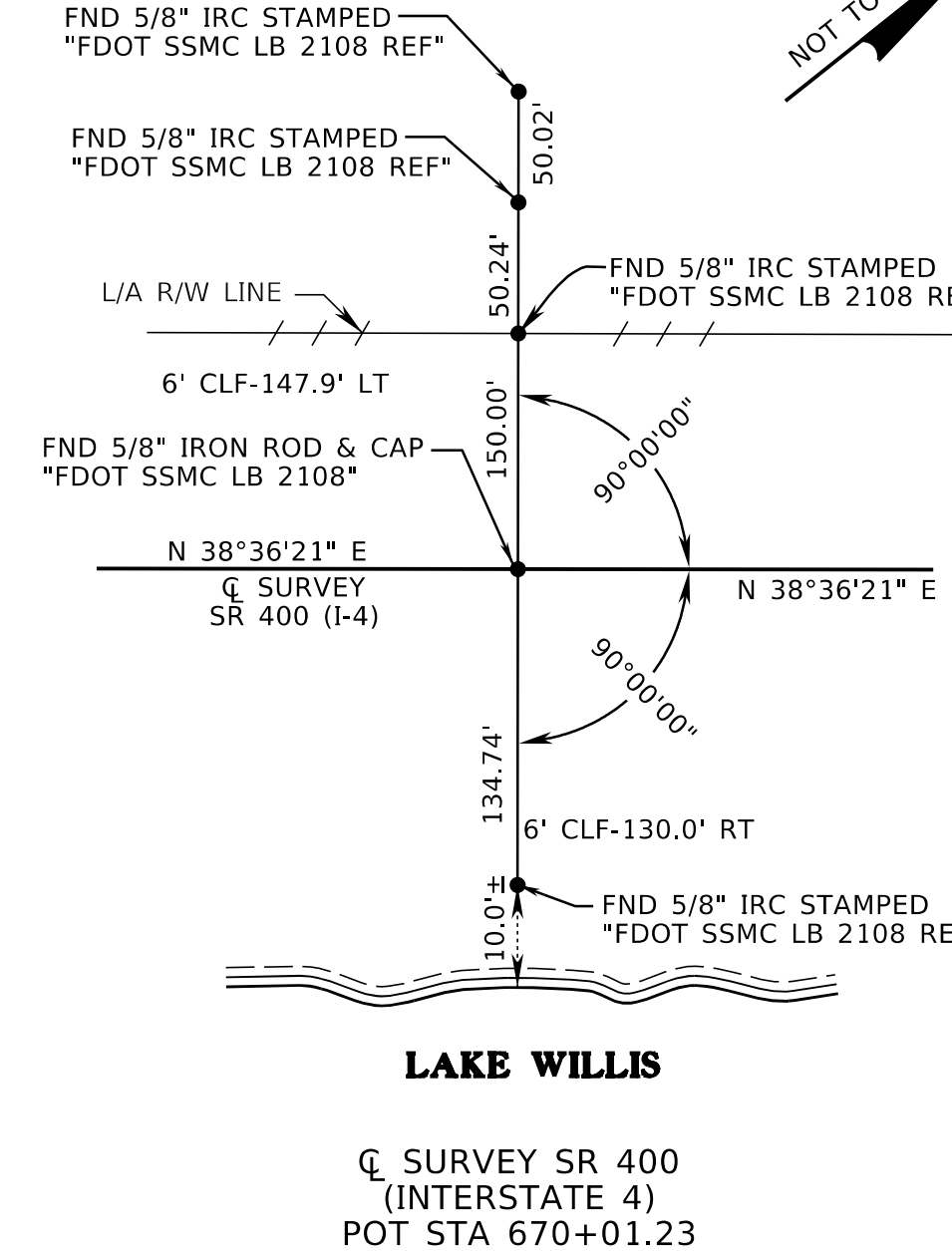
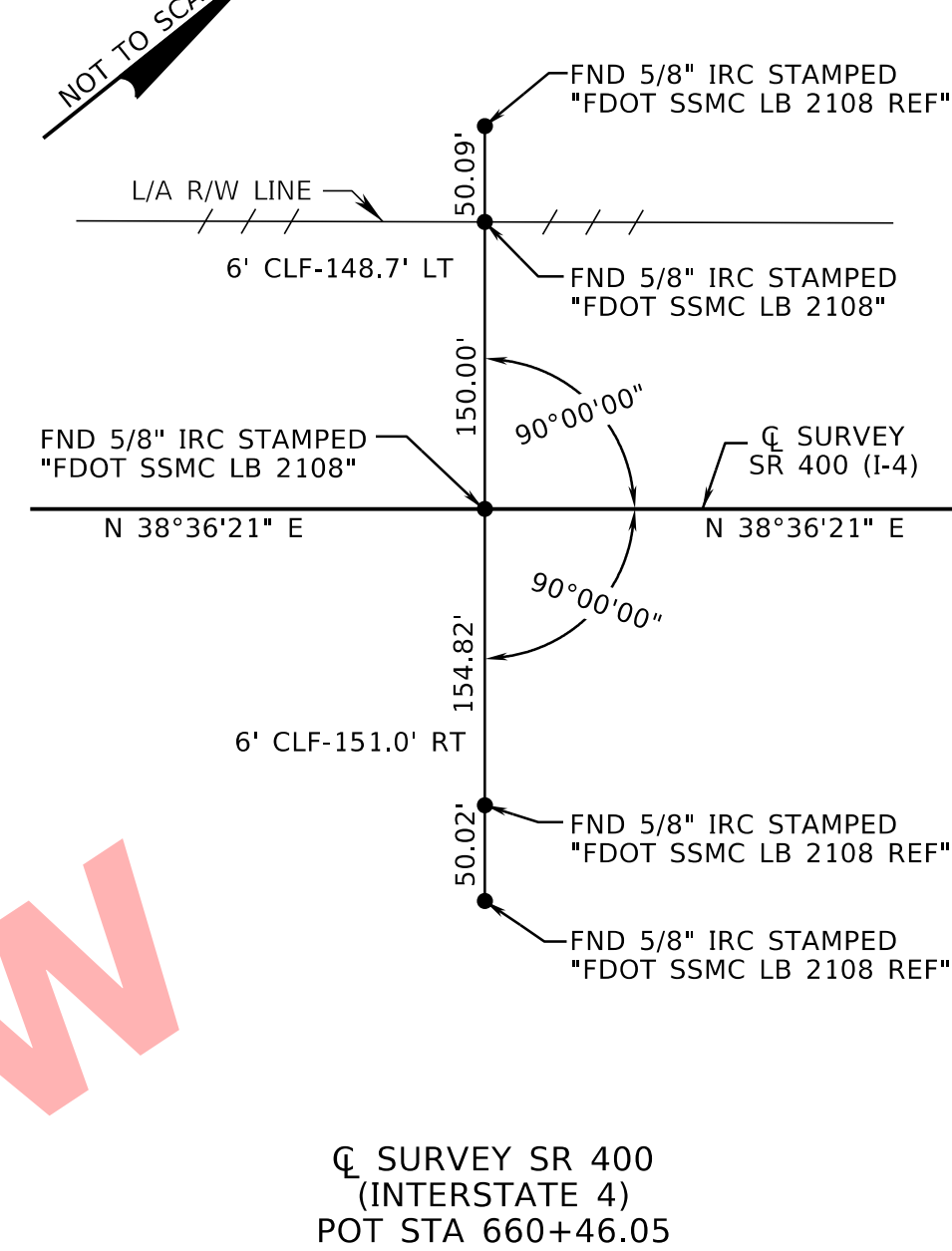
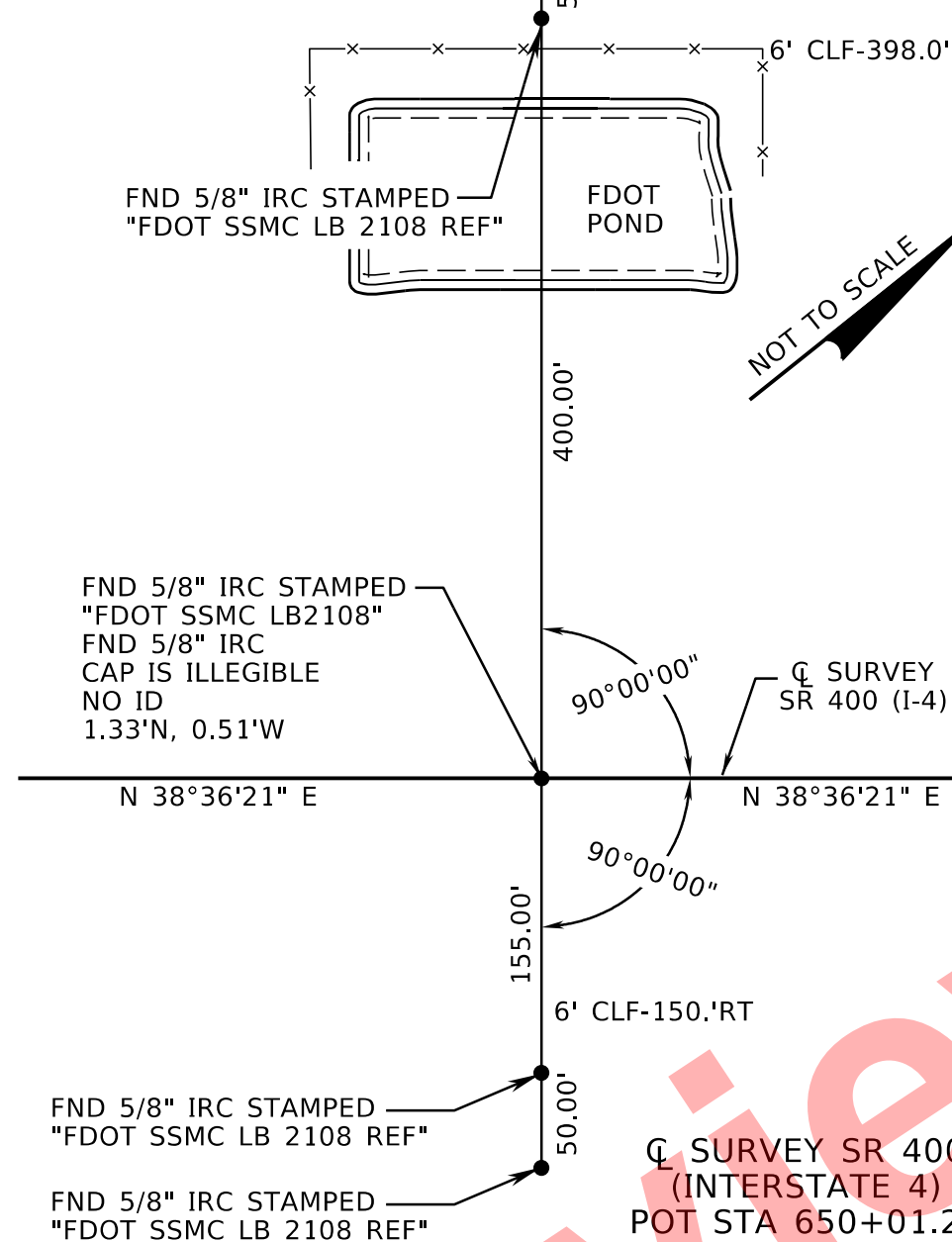
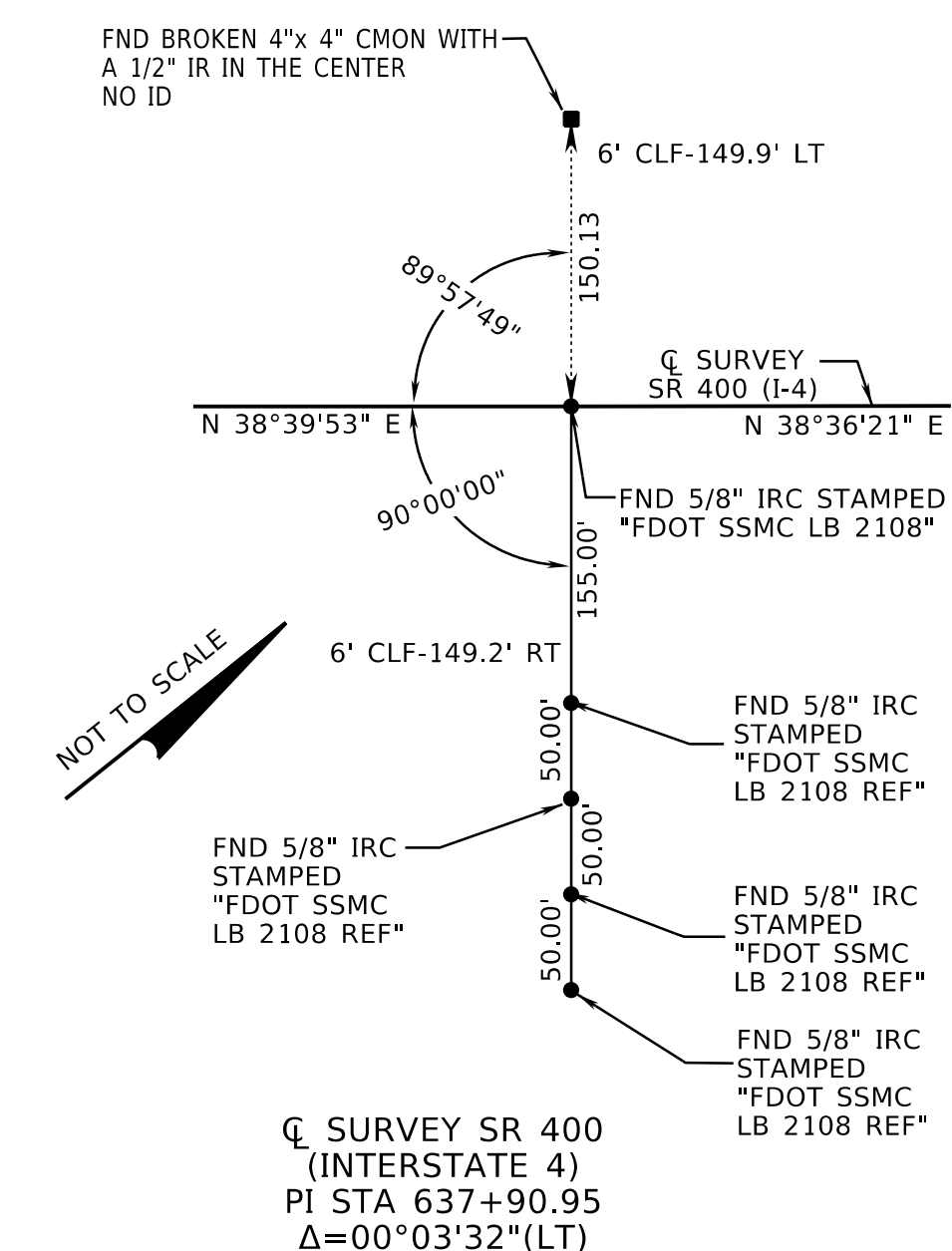
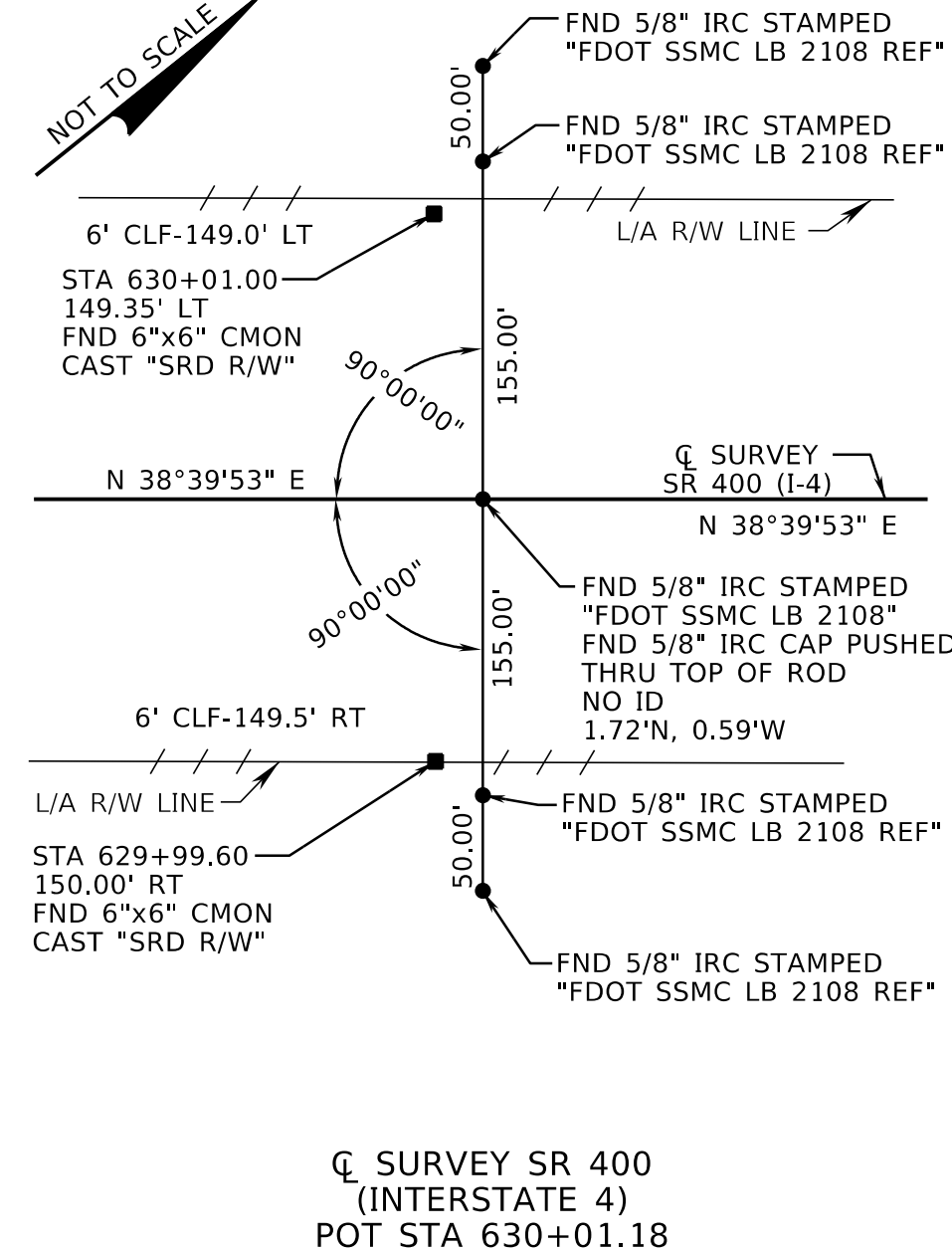
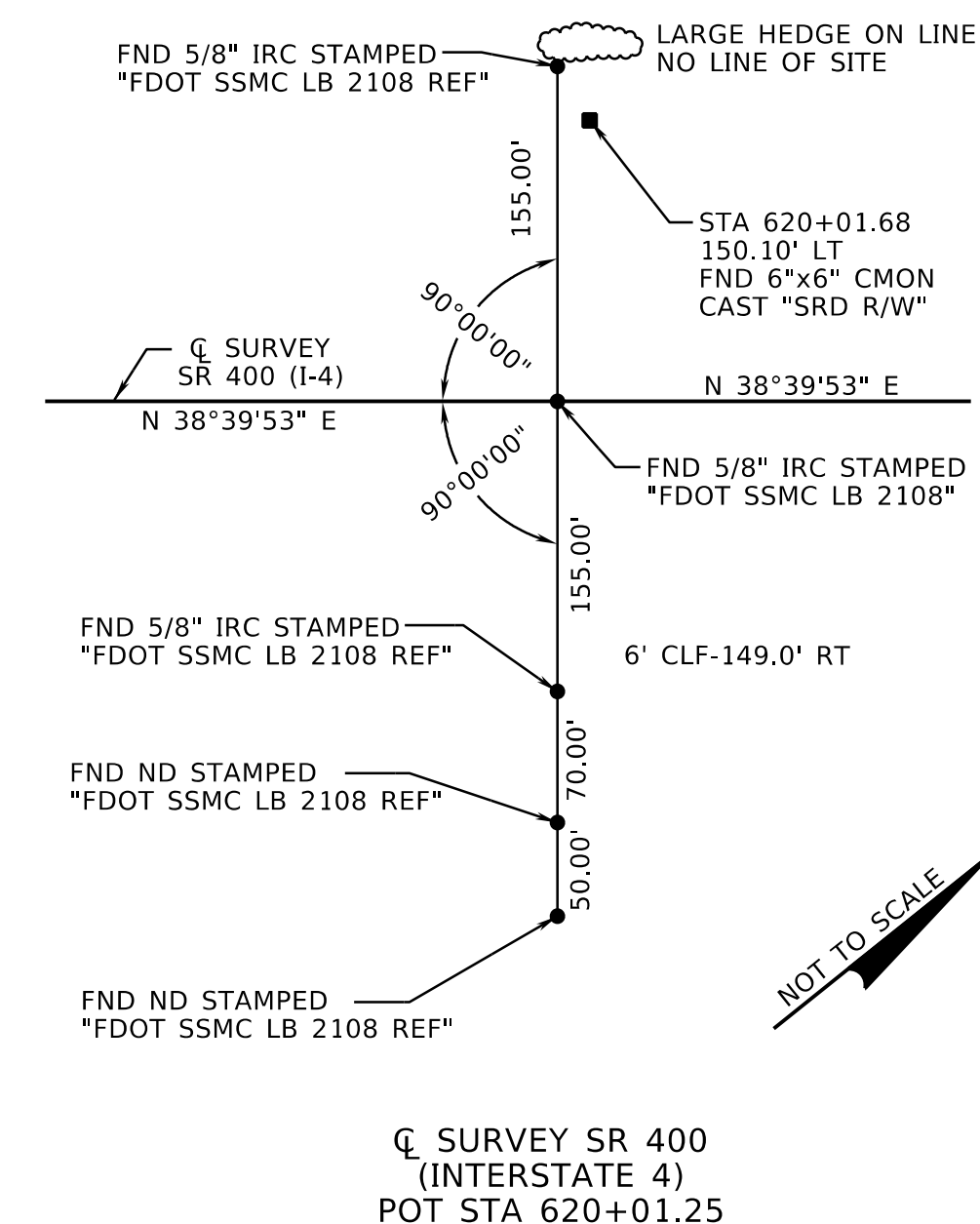
- PI STA=153+34.30
Δ=108°28'24" RT
R=230.00'
T=319.33'
L=435.44'
PC STA=150+14.96
PT STA=154+50.40
PI N=1482509.4761
E=502718.0093

THIS MAP IS NOT A SURVEY

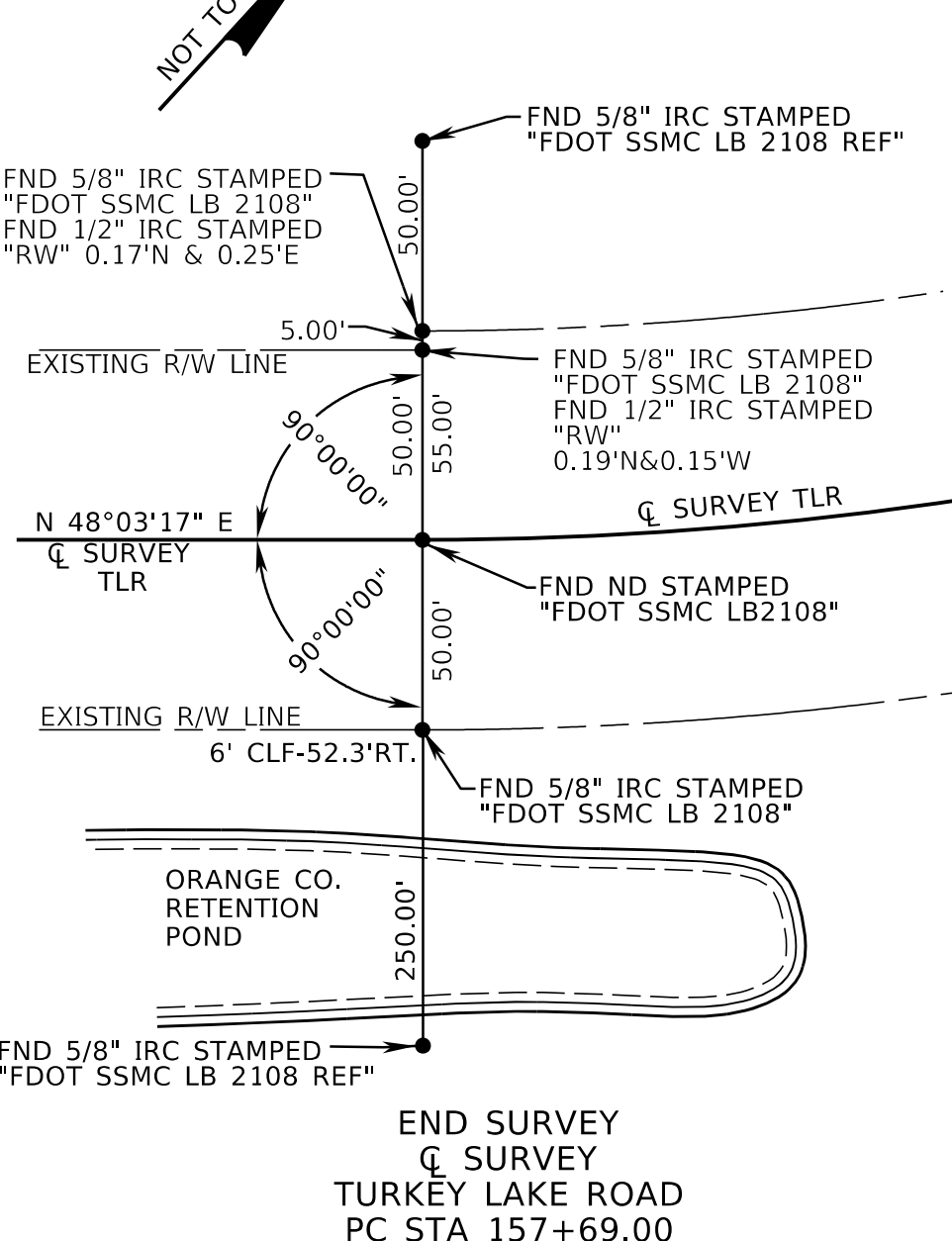
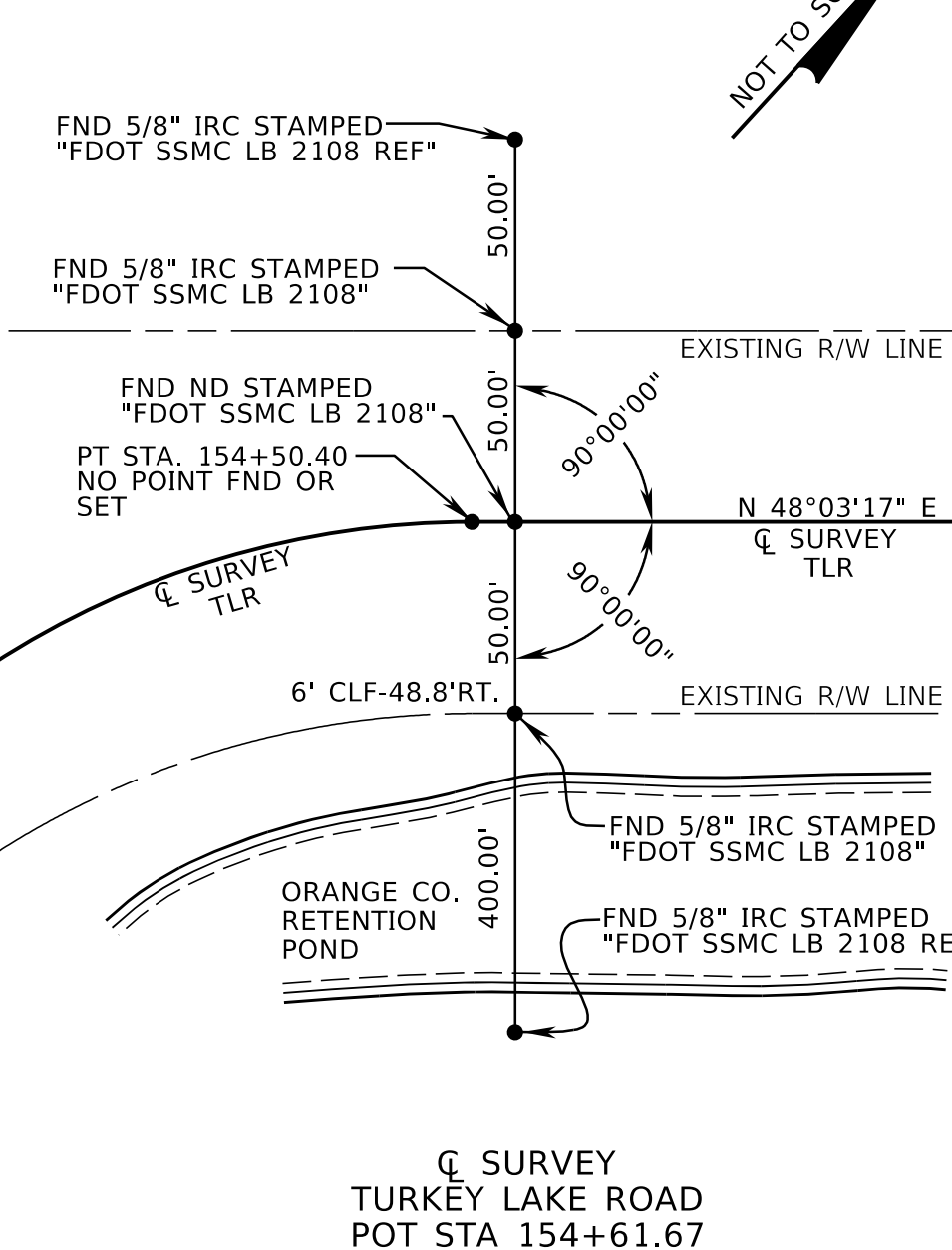
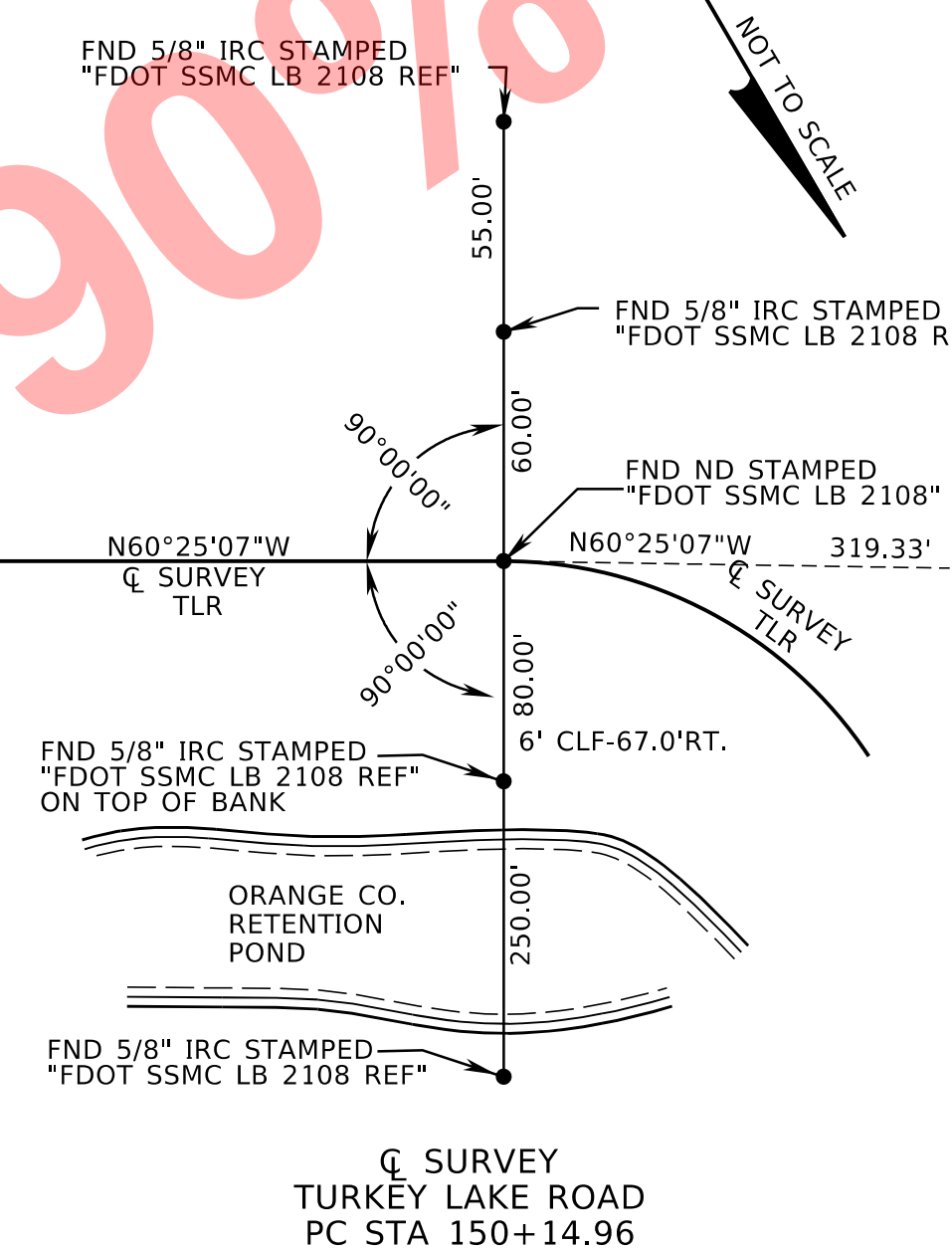
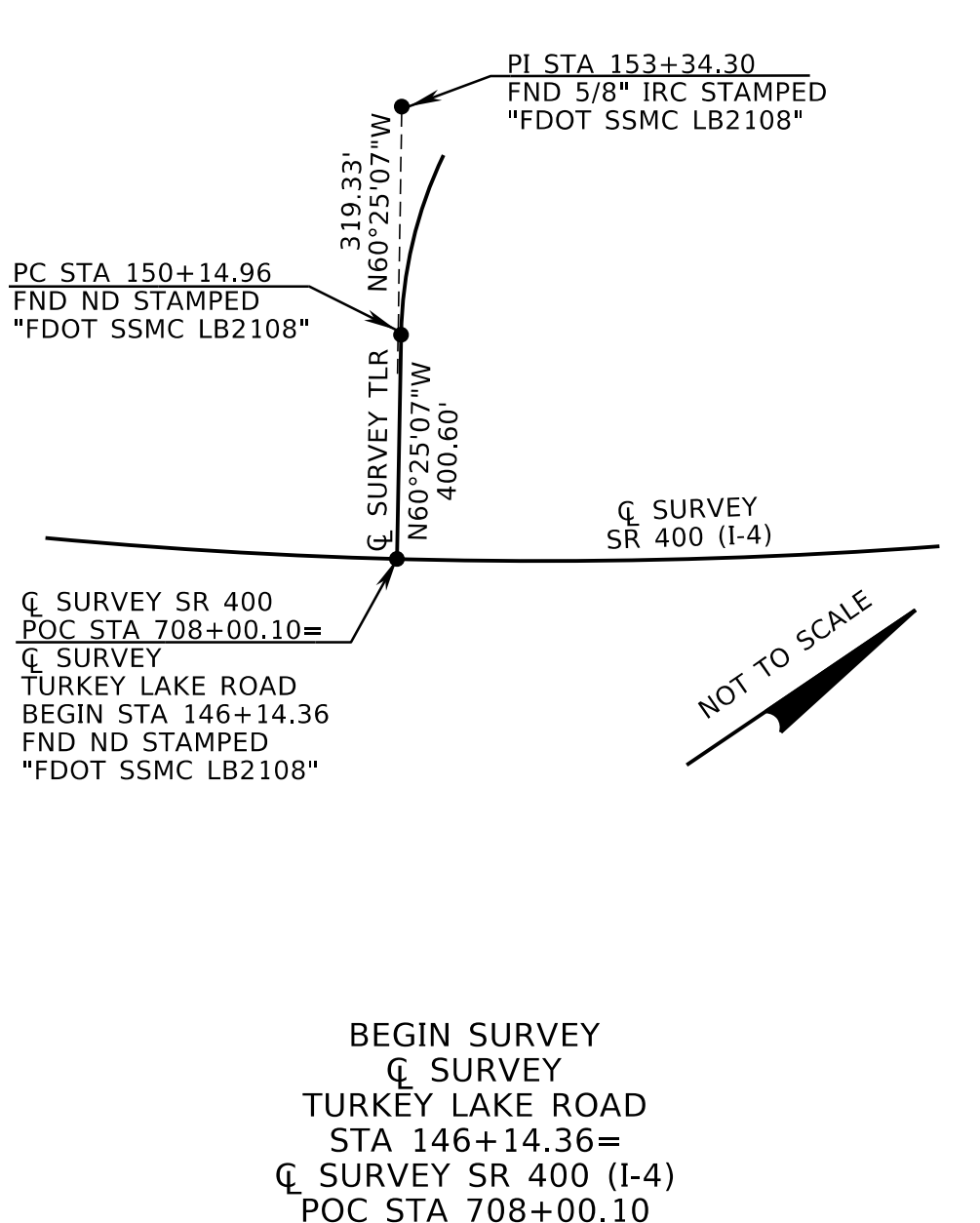
SR 400 (I-4) AT DARYL CARTER PARKWAY INTERCHANGE

RIGHT OF WAY MAP	FLORIDA DEPARTMENT OF TRANSPORTATION SURVEYING AND MAPPING	APPROVED BY _____ DATE _____	BY _____ DATE _____	FED. PROJ. STATE ROAD NO. 400	SECTION 75280 ORANGE COUNTY	MAPS PREPARED BY: AECOM 150 NORTH ORANGE AVE. SUITE 200 ORLANDO, FLORIDA 32801-1949 407-422-0353 LB #7860	DATA SOURCE: SEE GENERAL NOTES ON SHEET ONE. SCALE: 1" = 100'
		REVISION _____ BY _____ DATE _____	PRELIM D. KING 9-26-2017			F.P. NO. 441113-1	SHEET 6 OF 8
		REVISION _____ BY _____ DATE _____	FINAL M. MILLER 7-11-2018			18/2018	

REFERENCE TIES SR 400



REFERENCE TIES TURKEY LAKE ROAD



SEE SHEET ONE FOR GENERAL NOTES AND LEGEND

SR 400 (I-4) AT DARYL CARTER PARKWAY INTERCHANGE

RIGHT OF WAY MAP	FLORIDA DEPARTMENT OF TRANSPORTATION SURVEYING AND MAPPING	APPROVED BY	DATE	BY	DATE	FED. PROJ. STATE ROAD NO. 400	SECTION 75280 ORANGE COUNTY	MAPS PREPARED BY: AECOM 150 NORTH ORANGE AVE, SUITE 200 ORLANDO, FLORIDA 32801-1949 407-422-0353 LB #7860	DATA SOURCE: SEE GENERAL NOTES SCALE: NOT TO SCALE		
		REVISION	BY	DATE	REVISION			BY	DATE	F.P. NO. 441113-1	SHEET 7 OF 8
		PRELIM	D. KING	11-01-2016	CHECKED			T. BARRY	7-11-2018		
		FINAL	T. BARRY	7-11-2018							

07/18/2018