



BUILDING A BETTER I-4

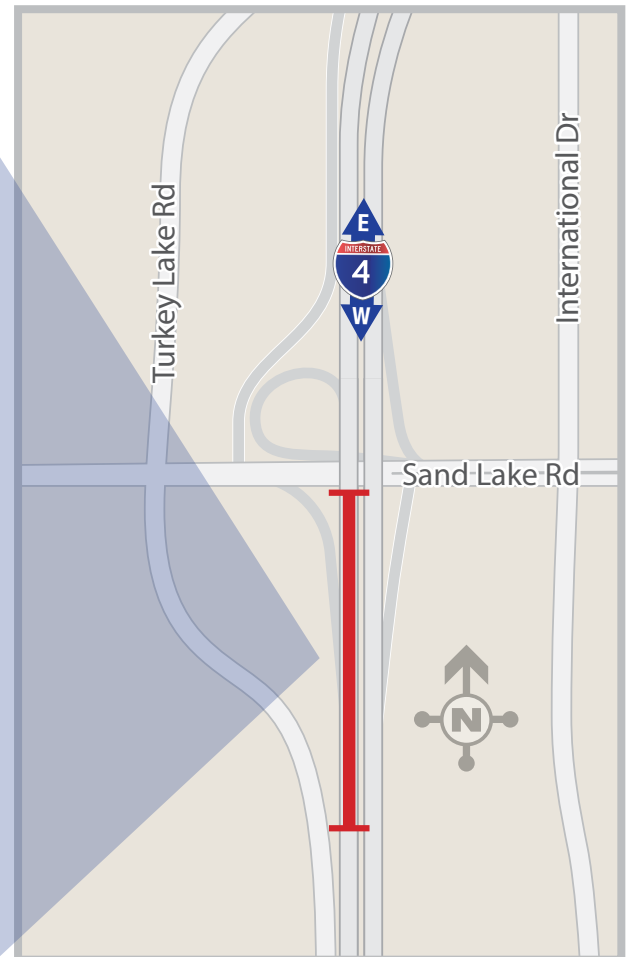
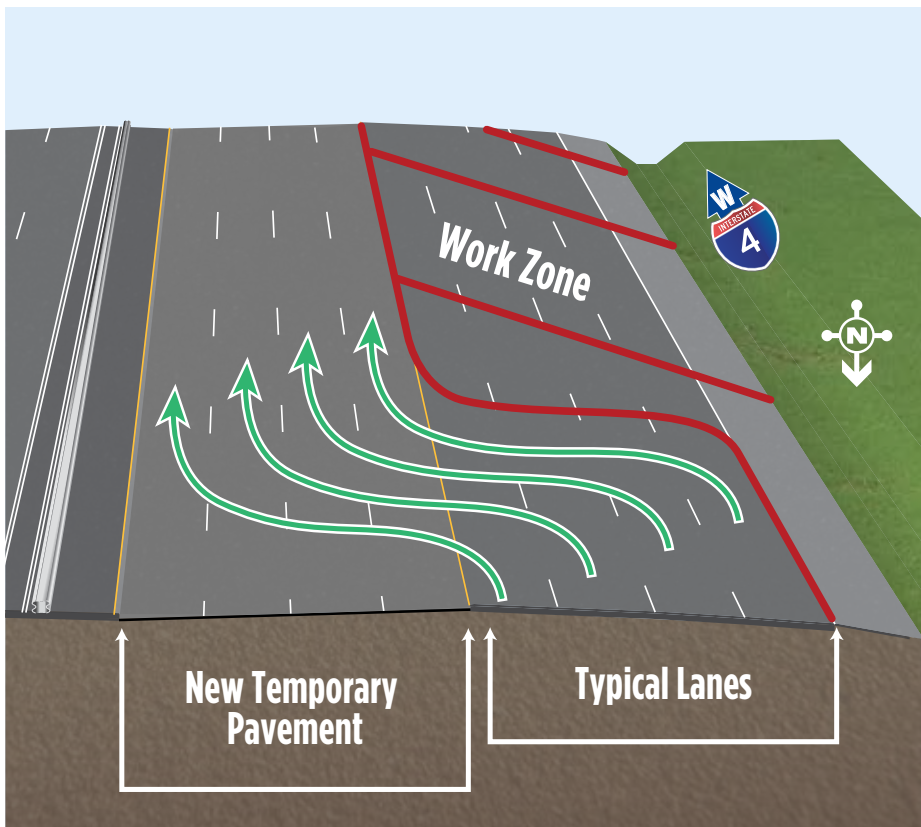
Stay Informed:

- » Project Hotline: 321-988-9375
- » Follow @i4Ultimate on Twitter
- » Subscribe to our monthly newsletter at fdot.tips/I4News
- » Subscribe to our YouTube channel at youtube.com/i4Ultimate

NEW TRAFFIC PATTERN ON WESTBOUND I-4 NEAR SAND LAKE ROAD

The Florida Department of Transportation (FDOT) shifted traffic on westbound Interstate 4 (I-4) just past Sand Lake Road on Monday, October 10. All westbound I-4 mainline traffic was shifted onto new temporary pavement in the median of I-4. The traffic shift provides space to allow crews to begin road and bridge construction for the Sand Lake Road and I-4 Interchange project. The shift will remain in place as the project progresses.

Westbound I-4



Closures are subject to change. Construction progress, roadway conditions and weather may require schedule adjustments. Please check fdot.tips/alertsmap for the most up-to-date information.



Visit I4Beyond.com/SandLake to learn more about this project.

