



BUILDING A BETTER I-4

Stay Informed:

- » Project Hotline: 844-ULT-INFO (858-4636)
- » Sign up for email and text alerts at fdot.tips/I4Alerts
- » Follow @i4Ultimate on Twitter
- » Subscribe to our monthly newsletter at fdot.tips/I4News

LEFT TURN TO NORTHBOUND WYMORE ROAD FROM LEE ROAD TEMPORARILY CLOSING FOR TWO DAYS

The Florida Department of Transportation (FDOT) is closing the left turn lane on eastbound Lee Road to northbound Wymore Road as soon as 5 a.m. Saturday, January 30 and will reopen as early as 5 a.m. Monday, February 1. This closure is necessary for median work. Low clearance under a SunRail bridge prevents large trucks from traveling north on Orlando Avenue (U.S. 17-92).

Accessing Wymore Road from eastbound Lee Road:

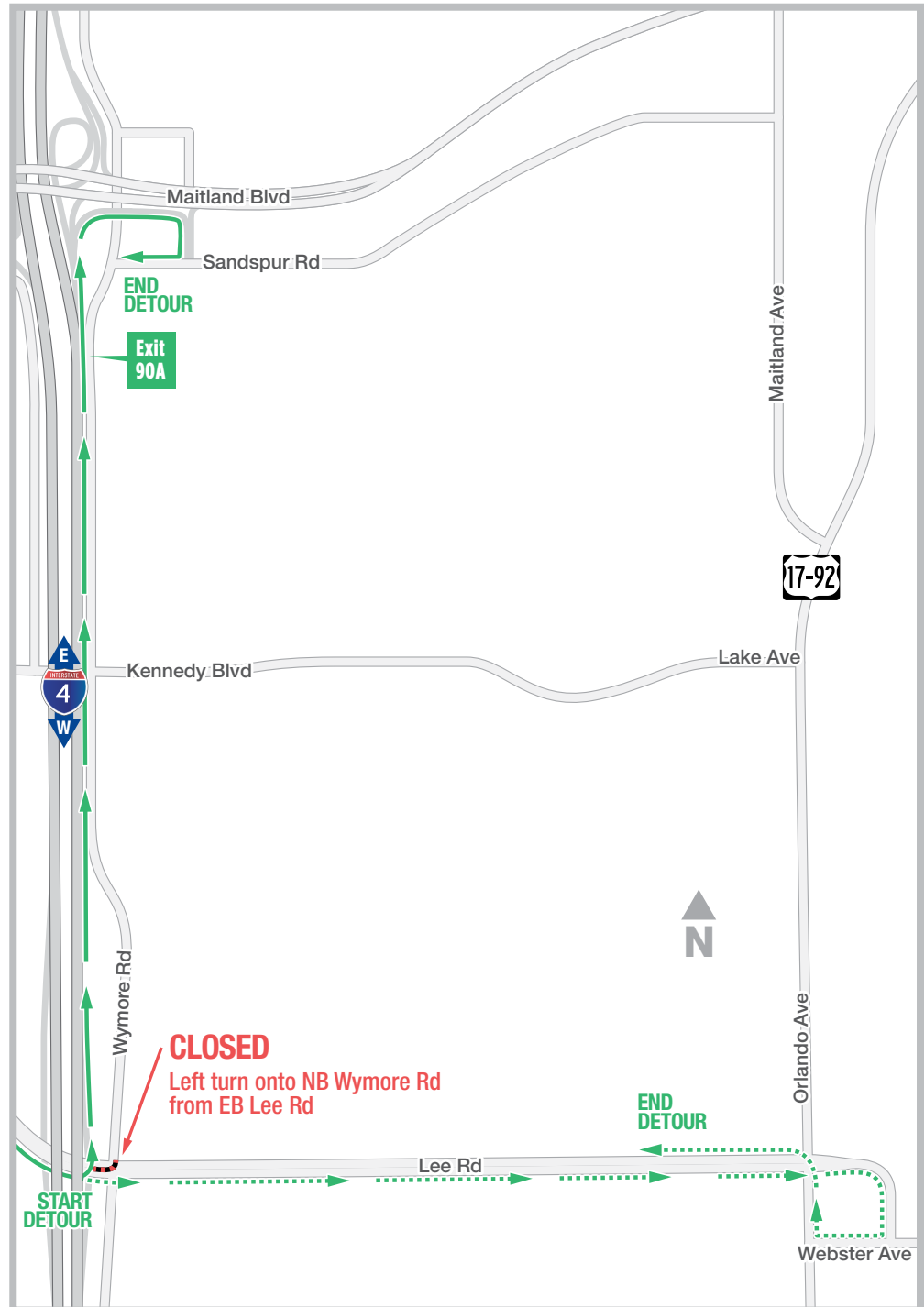
- Enter eastbound I-4
- Exit to Sandspur Road (Exit 90A)
- Turn right onto Sandspur Road
- Continue to Wymore Road

Or

- Continue east on Lee Road
- Continue past the traffic signal to Webster Avenue
- Turn right onto Webster Avenue
- Turn right onto Orlando Avenue
- Turn left onto Lee Road
- Continue to Wymore Road

PROJECT INFO

The \$2.3 billion I-4 Ultimate project is reconstructing 21 miles of interstate from west of Kirkman Road to east of State Road 434 in Longwood. For more information about I-4 Ultimate, contact David Parks, I-4 Ultimate Community Outreach Specialist, at 844-ULT-INFO (844-858-4636) or DavidParks@i4Ultimate.com.



Sign up for I-4 Construction Updates and Alerts at I4Ultimate.com

Learn about design and construction on the next 40 miles of I-4 at I4Beyond.com