



# BUILDING A BETTER I-4

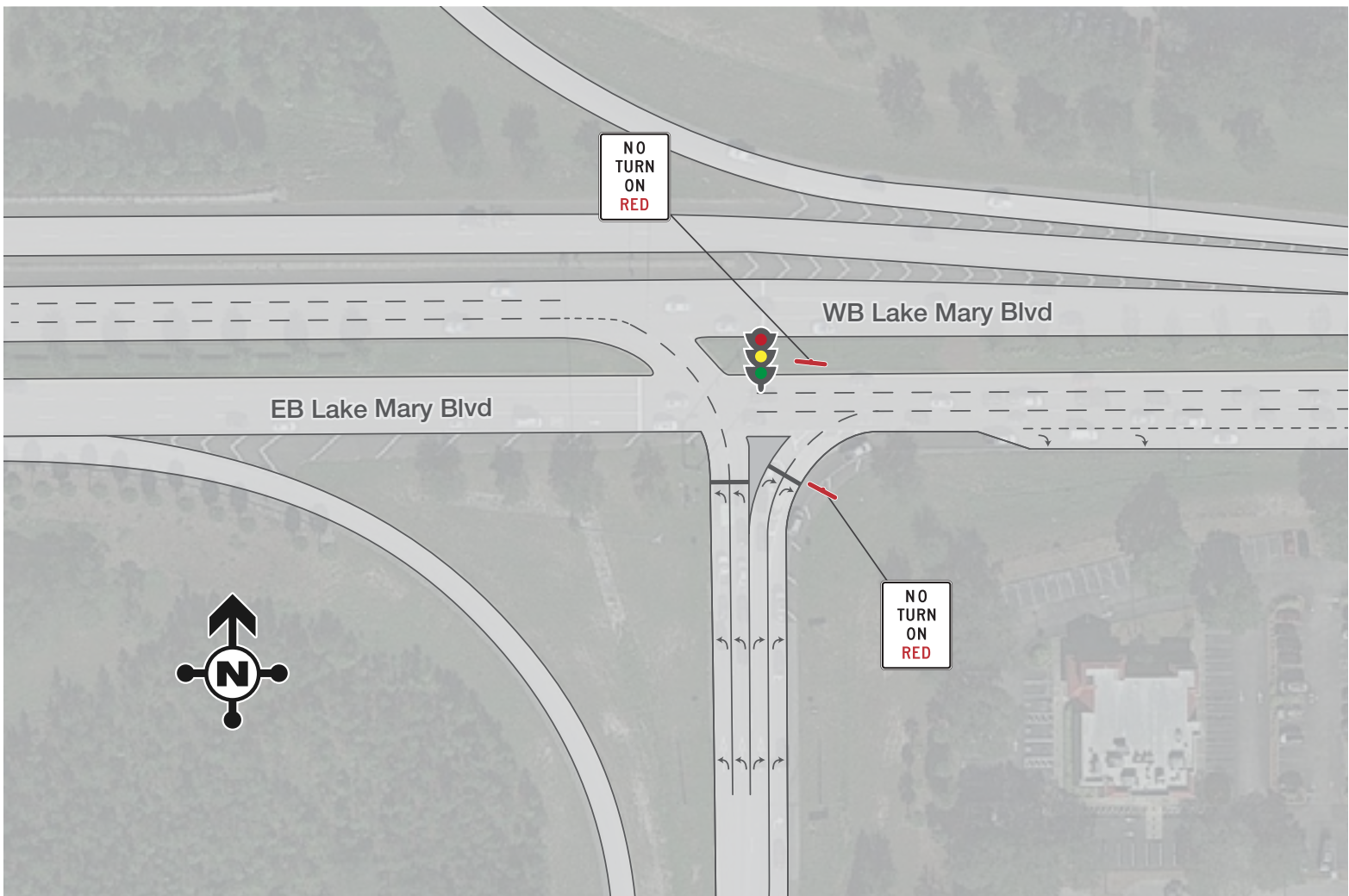
## Stay Informed:

- » Project Hotline: 844-ULT-INFO (858-4636)
- » Sign up for email and text alerts at [fdot.tips/alerts](https://fdot.tips/alerts)
- » Subscribe to our monthly newsletter at [fdot.tips/news](https://fdot.tips/news)
- » Follow us on Twitter at [fdot.tips/twitter](https://fdot.tips/twitter)
- » Subscribe to our YouTube channel at [fdot.tips/youtube](https://fdot.tips/youtube)

## EB I-4 EXIT TO LAKE MARY BOULEVARD SHIFTING TO NEW CONFIGURATION JANUARY 9

The Florida Department of Transportation is opening a new configuration of the eastbound Interstate 4 (I-4) exit ramp to Lake Mary Boulevard as soon as the morning of Thursday, January 9. The new alignment has eliminated the concrete island separating the two right turn lanes onto eastbound Lake Mary Boulevard. Both lanes will now place traffic onto the Lake Mary Boulevard through lanes, meaning traffic in the right lane will no longer feed into the right-turn-only lane leading to Lake Emma Road. Additionally, motorists exiting eastbound I-4 will no longer be able to make a right turn on red at Lake Mary Boulevard.

See reverse for more information on I-4 Beyond the Ultimate projects in Seminole County.



Sign up for I-4 Construction Updates and Alerts at [I4Beyond.com](https://I4Beyond.com)  
Learn about commuter options in Central Florida at [reThinkYourCommute.com](https://reThinkYourCommute.com)





# BUILDING A BETTER I-4

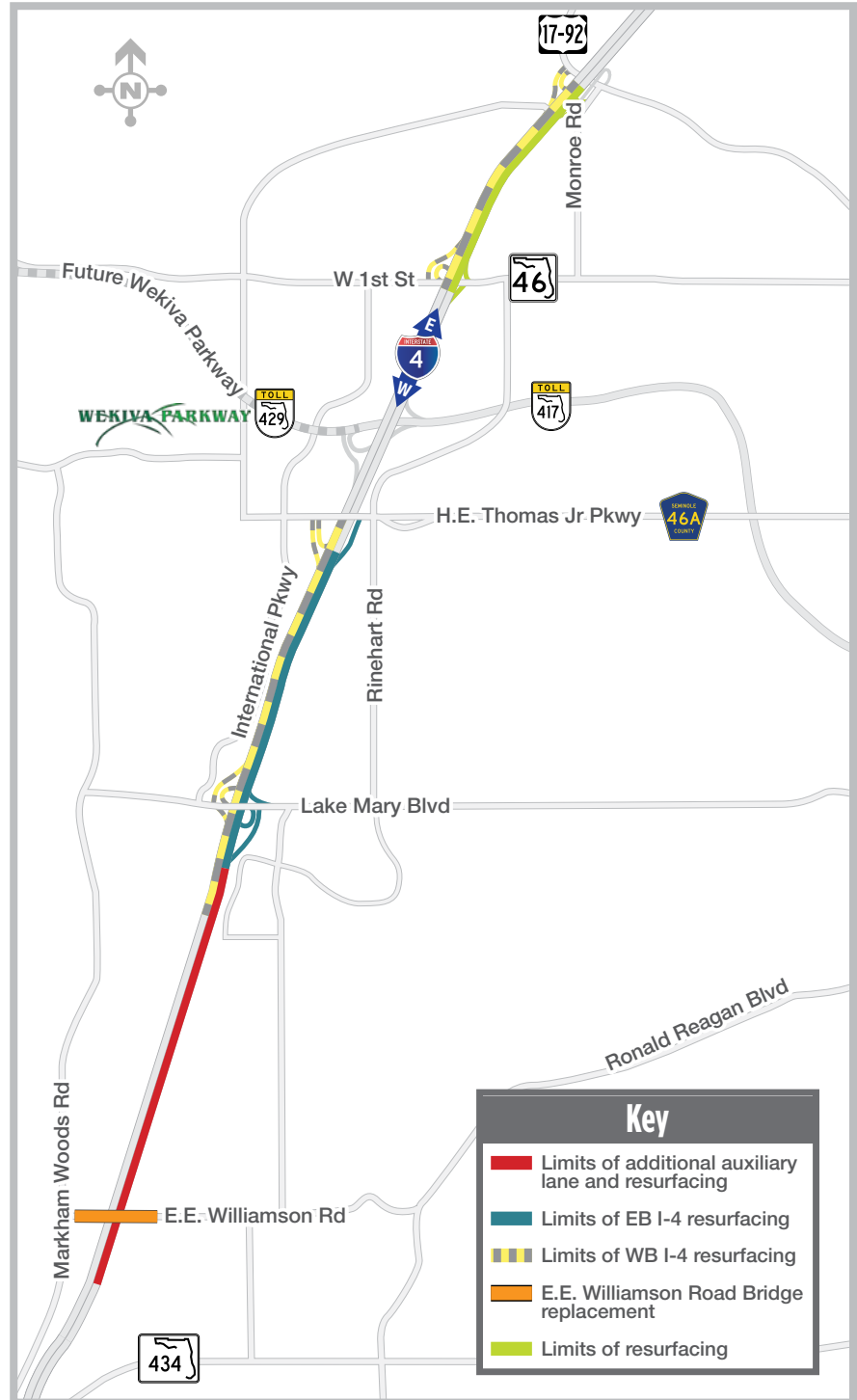
## Stay Informed:

- » Project Hotline: 844-ULT-INFO (858-4636)
- » Sign up for email and text alerts at [fdot.tips/alerts](https://fdot.tips/alerts)
- » Subscribe to our monthly newsletter at [fdot.tips/news](https://fdot.tips/news)
- » Follow us on Twitter at [fdot.tips/twitter](https://fdot.tips/twitter)
- » Subscribe to our YouTube channel at [fdot.tips/youtube](https://fdot.tips/youtube)

## IMPROVEMENTS TO INTERSTATE 4 (I-4) IN SEMINOLE COUNTY

The Florida Department of Transportation (FDOT) is making improvements to I-4 in Seminole County that will keep traffic flowing smoothly and safely. The projects include adding an auxiliary lane and resurfacing eastbound I-4 from the I-4 Ultimate project to west of Lake Mary Boulevard (FPID: 439682-3) and reconstructing the E.E. Williamson Road overpass (FPID: 439682-4). Improvements also include resurfacing both directions of I-4 from west of Lake Mary Boulevard to County Road 46A and State Road 46 to the Volusia County line (FPIDs: 439682-1, -2, -5).

- » These projects will help accommodate traffic from the eastbound I-4 Ultimate Express Lanes as well as to extend the life of the existing pavement on I-4.
- » The eastbound I-4 auxiliary lane construction project includes the realignment of the eastbound I-4 exit ramp to Lake Mary Boulevard. (See reverse side for more information.)
- » Construction on eastbound I-4 began in September 2019. Construction on westbound I-4 is scheduled to begin in summer 2020.
- » During construction, lane closures on I-4 will be limited to overnight hours between 8 p.m. and 6:30 a.m.



Sign up for I-4 Construction Updates and Alerts at [I4Beyond.com](https://I4Beyond.com)  
 Learn about commuter options in Central Florida at [reThinkYourCommute.com](https://reThinkYourCommute.com)

