



# BUILDING A BETTER I-4

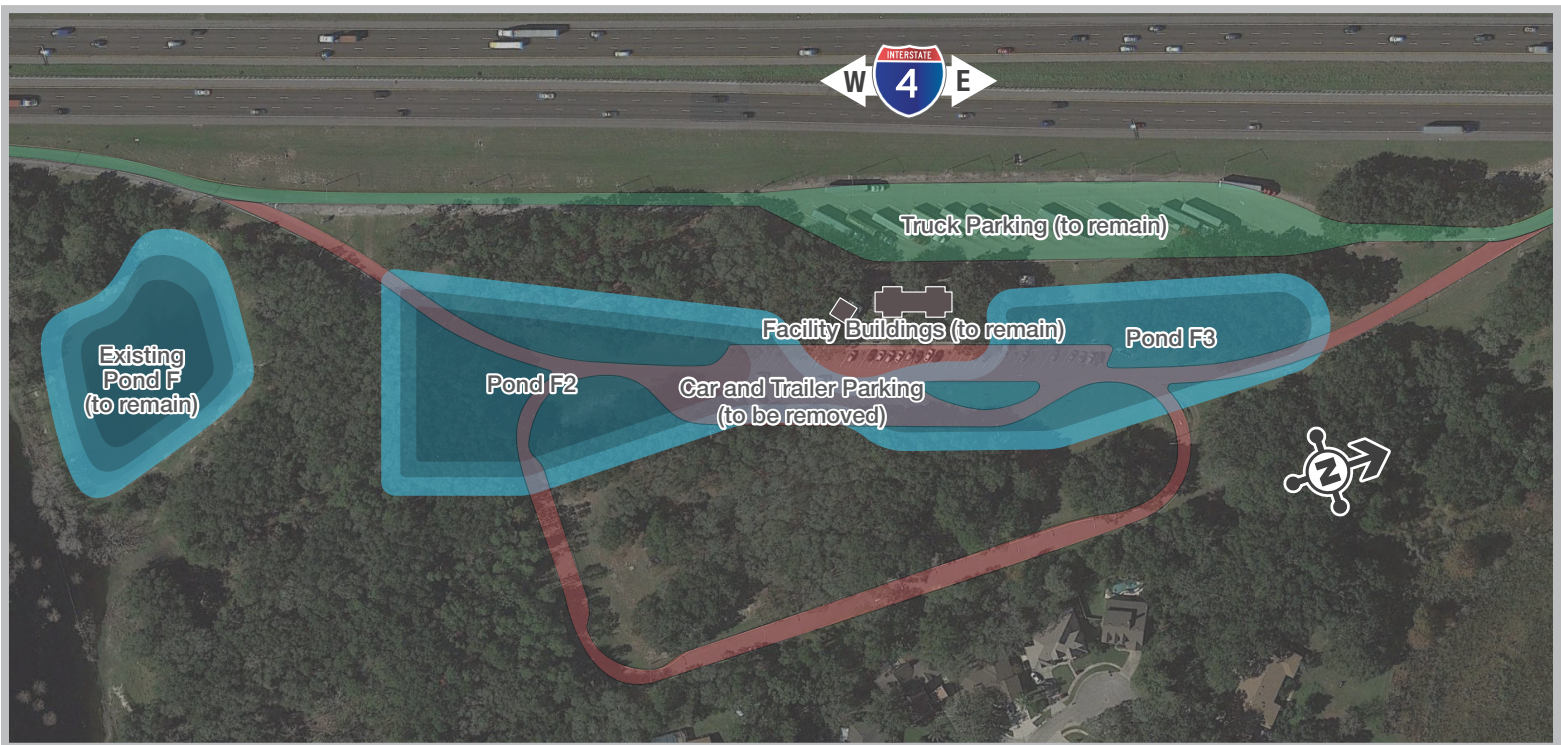
## Stay Informed:

- » Project Hotline: 844-ULT-INFO (858-4636)
- » Sign up for email and text alerts at [fdot.tips/alerts](https://fdot.tips/alerts)
- » Subscribe to our monthly newsletter at [fdot.tips/news](https://fdot.tips/news)
- » Follow us on Twitter at [fdot.tips/twitter](https://fdot.tips/twitter)
- » Subscribe to our YouTube channel at [fdot.tips/youtube](https://fdot.tips/youtube)

## EASTBOUND I-4 REST AREA IN SEMINOLE COUNTY CHANGING TO TRUCK PARKING ONLY

As soon as February 18, 2020, car and trailer parking at this rest area will permanently close. The facility will be modified to a truck-only parking area. This is being done to accommodate a new stormwater pond for a new eastbound Interstate 4 (I-4) auxiliary lane. The truck parking area and facilities will remain open to truck drivers only.

The next rest areas are located on northbound Interstate 95, 3.5 miles north of the U.S. 1 interchange (Exit 298), and on southbound Interstate 95, 4.25 miles south of the County Road 5A/Deering Parkway interchange (Exit 231). There are multiple nearby I-4 interchanges at Lake Mary Boulevard, County Road 46A, and S.R. 46. Park and ride facilities are available at the Dirksen Drive interchange (Exit 108 to 295 Debarry Ave.) and at the Saxon Boulevard interchange (Exit 111B west to 1299 Saxon Blvd., Orange City, FL 32763) for motorists to take a break from the road; however, there are no restroom facilities at these locations.



### PROJECT INFO

The Florida Department of Transportation (FDOT) is making improvements to I-4 in Seminole County, including adding an eastbound I-4 auxiliary lane from the end of the I-4 Ultimate project to west of Lake Mary Boulevard. For more information, visit [i4beyond.com](https://i4beyond.com), call 386-943-5593 or email [info@i4ultimate.com](mailto:info@i4ultimate.com).

Closure subject to change. Construction progress, roadway conditions and weather may require schedule adjustments. Please check [i4beyond.com/alertsmap](https://i4beyond.com/alertsmap) for the most up-to-date information.



For more info: [I4Beyond.com/truck](https://i4beyond.com/truck)





# BUILDING A BETTER I-4

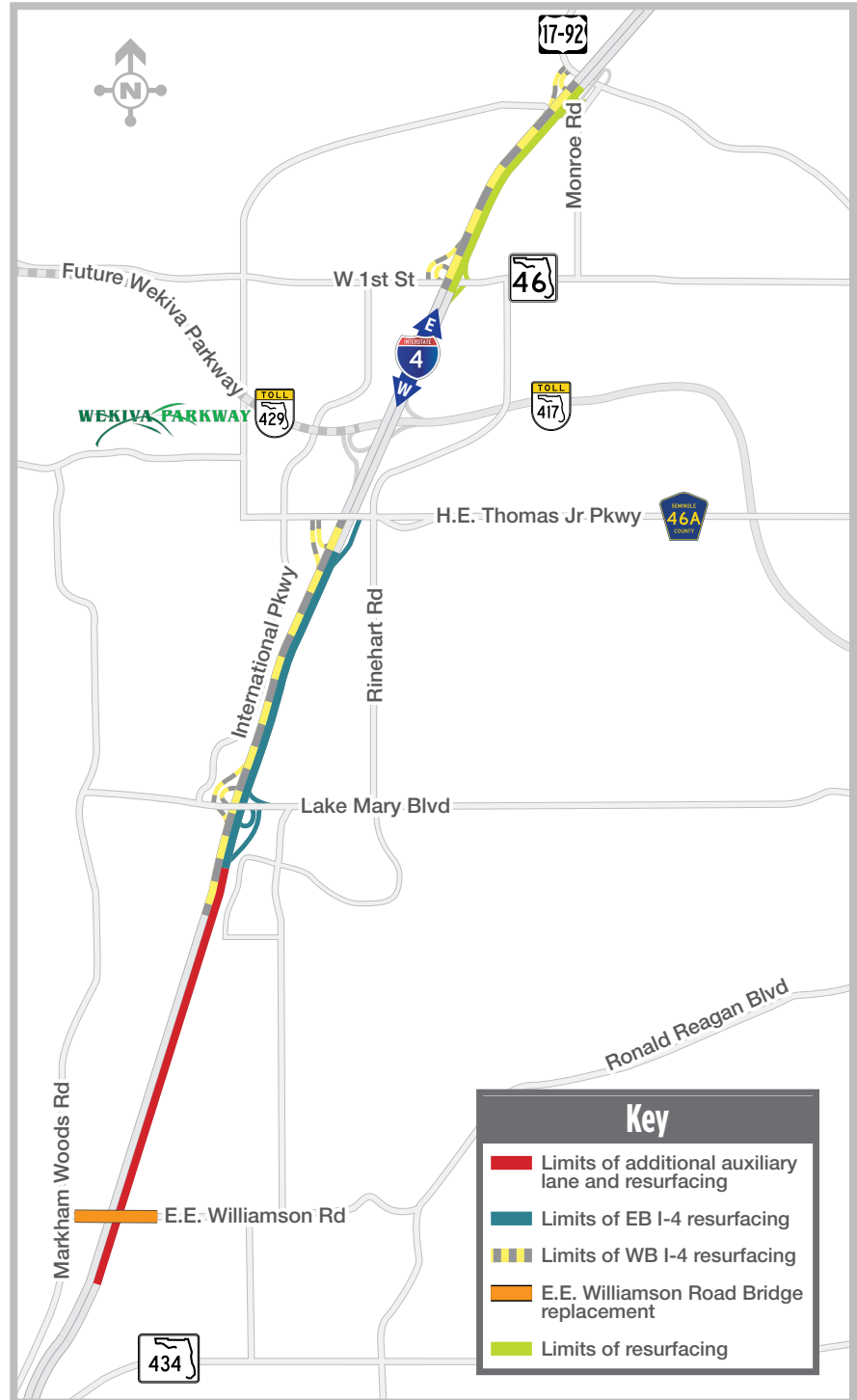
## Stay Informed:

- » Project Hotline: 844-ULT-INFO (858-4636)
- » Sign up for email and text alerts at [fdot.tips/alerts](https://fdot.tips/alerts)
- » Subscribe to our monthly newsletter at [fdot.tips/news](https://fdot.tips/news)
- » Follow us on Twitter at [fdot.tips/twitter](https://fdot.tips/twitter)
- » Subscribe to our YouTube channel at [fdot.tips/youtube](https://fdot.tips/youtube)

## IMPROVEMENTS TO INTERSTATE 4 (I-4) IN SEMINOLE COUNTY

The Florida Department of Transportation (FDOT) is making improvements to I-4 in Seminole County that will help keep traffic flowing more smoothly and safely. The projects include adding an auxiliary lane and resurfacing eastbound I-4 from the I-4 Ultimate project to west of Lake Mary Boulevard (FPID: 439682-3) and reconstructing the E.E. Williamson Road overpass (FPID: 439682-4). Improvements also include resurfacing both directions of I-4 from west of Lake Mary Boulevard to County Road 46A and State Road 46 to the Volusia County line (FPIDs: 439682-1, -2, -5).

- » These projects will help accommodate traffic from the eastbound managed lanes of I-4 Ultimate as well as to extend the life of the existing pavement on I-4.
- » The eastbound I-4 auxiliary lane construction project includes the realignment of the eastbound I-4 exit ramp to Lake Mary Boulevard.
- » Construction on eastbound I-4 began in September 2019. Construction on westbound I-4 is scheduled to begin in summer 2020.
- » During construction, lane closures on I-4 will be limited to overnight hours between 8 p.m. and 6:30 a.m.



For more info: [I4Beyond.com/truck](https://I4Beyond.com/truck)

