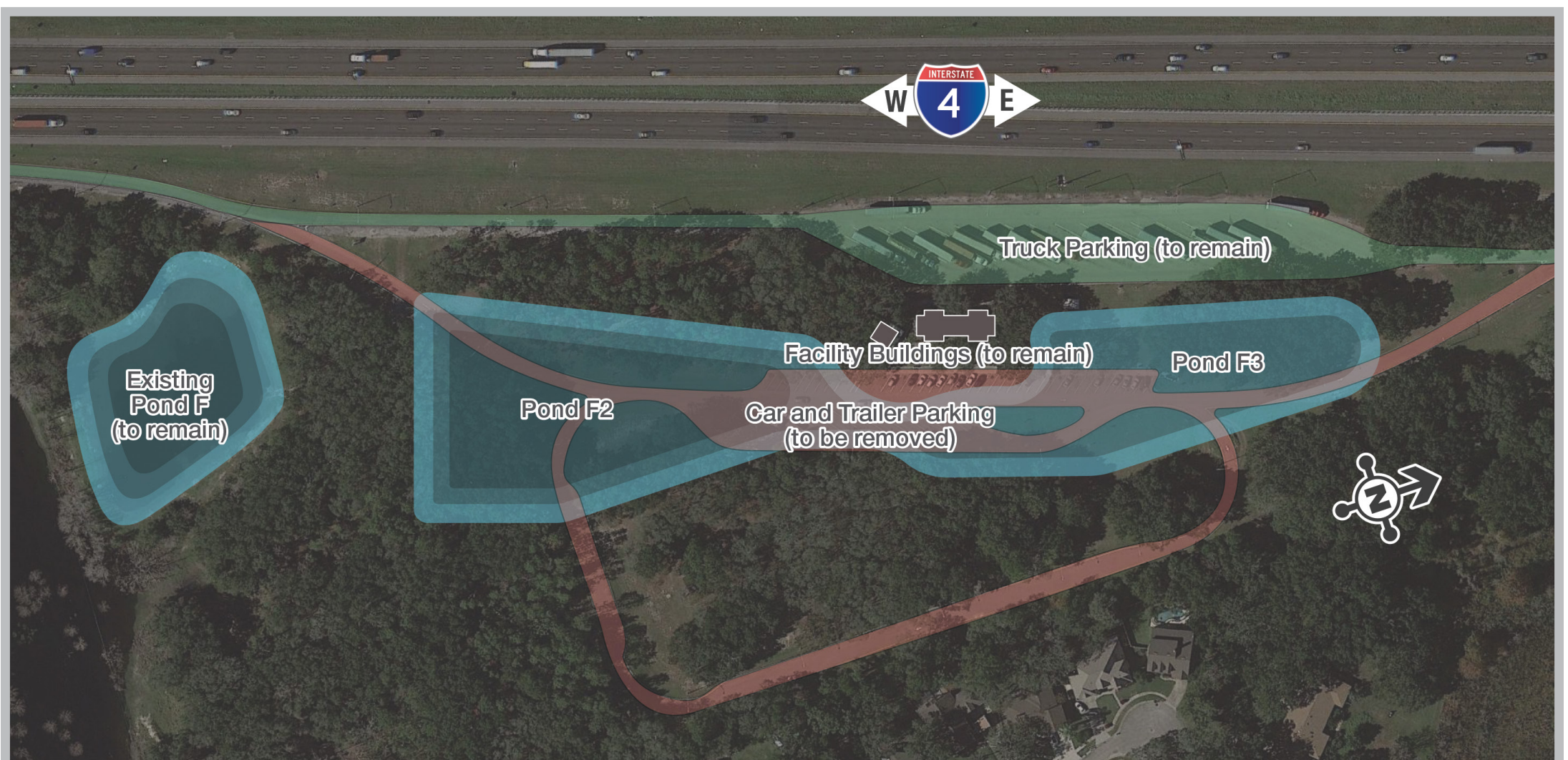


# ATTENTION REST AREA MOTORISTS

As soon as February 18, parking facilities for cars, SUVs and other passenger vehicles will permanently close at this rest area. The facility will be modified to a truck-only parking area. This is being done to accommodate a new stormwater pond for a new eastbound Interstate 4 (I-4) auxiliary lane. The truck parking area and facilities will remain open to truck drivers only.

The next rest areas are located on northbound Interstate 95, 3.5 miles north of the U.S. 1 interchange (Exit 298), and on southbound Interstate 95, 4.25 miles south of the County Road 5A/Deering Parkway interchange (Exit 231). If you need to take a break sooner there are multiple nearby I-4 exits at Lake Mary Boulevard, County Road 46A, and S.R. 46. Park and ride facilities are available at the Dirksen Drive interchange (Exit 108 to 295 Debarry Ave.) and at the Saxon Boulevard interchange (Exit 111B west to 1299 Saxon Blvd., Orange City, FL 32763); however, there are no restroom facilities at these park and ride locations.



## PROJECT INFO

The Florida Department of Transportation (FDOT) is making improvements to I-4 in Seminole County, including adding an eastbound I-4 auxiliary lane from the end of the I-4 Ultimate project to west of Lake Mary Boulevard.

For more information, visit [I4Beyond.com](http://I4Beyond.com), call 386-943-5593 or email [info@i4ultimate.com](mailto:info@i4ultimate.com).



For more info: [I4Beyond.com/truck](http://I4Beyond.com/truck)

